

The best of both worlds – 2 hot cases in 1 with Full Service & Self Service!

Get two to three times as much food display in your valuable in-line footprint with our TTN & TTN2 Titan Series Combination Full Service Bulk Hot Food & Self Service Rotisserie Chicken and Packaged Hot Food Display! Scroll down to see why Atlantic HOT Food Bars is the industry leader, with the broadest offering of standard and custom self-service hot food bars.



You tell us the size, and we either have a standard model to meet your needs or we will design a merchandiser, to your desired size and specifications. Our TTN Series offers a bottom level of self-service hot packaged food and a top level of full-service hot bulk food. Our TTN2 Series offers a second self-service level for additional hot grab & go capacity. ALL levels feature top & bottom heat to keep your food looking fresh and inviting. Only Atlantic GUARANTEES temperature maintenance!

Option for rear mirrored display offers see-through visibility to employees and a BEAUTIFUL mirrored image to the customer. Brilliant illumination shows off the food and makes it visible from 100 feet away.

If you are selling hot food full service, you won't believe the profitability of this self service portion of this unit due to reduced labor costs, convenience for shoppers, higher sales and lower shrink. An hour before the full-service food in pans becomes unsaleable, package and label it and put it on the self-service shelf where it will extend shelf life, minimize shrink, increase profits and maintain temperature indefinitely and offer shoppers a convenient on-the-run choice.



This unit is a MONEY MAKER and a SELL-THROUGH BEAST !



Atlantic Food Bars

Hot & Cold Food Equipment Specialists

888-MEAL-SOLUTIONS (888-632-5765)

info@atlanticfoodbars.com

www.atlanticfoodbars.com



TTN & TTN2 Series **Titan Combination Full Service Bulk Hot Food**
& Self Service Rotisserie Chicken and Packaged Hot Food Display

TTN & TTN2 Series

Titan Combination Full Service Bulk Hot Food & Self Service Rotisserie Chicken and Packaged Hot Food Display



TTN

Standard Features

Self Service Rotisserie Chicken & Packaged Hot Food Section –

Bottom Level(s)

- Top heat provides outstanding temperature maintenance, brilliant illumination
- Stainless steel hot deck has even corner-to-corner heat
- Stainless steel body and heavy duty protective bumper in colors of your choice
- Infinite top & bottom heat controls
- Meets all health department requirements – temperature maintenance GUARANTEED!

Options

- ☐ Plastic laminated steel body in lieu of #4 satin finish stainless steel
- ☐ Powder coated finish
- ☐ Curved front profile
- ☐ Single phase breaker panel
- ☐ Three phase breaker panel
- ☐ Convert center shelf to full-service (on TTN2 3-level model)

Standard Features

Full Service Fried Chicken & Bulk Hot Food Section – **Top Level**

- Front tempered glass offers outstanding visibility of food, tilts out for easy cleaning
- Stainless steel hot well has consistent corner-to-corner heat
- Top heat provides brilliant illumination and outstanding temperature maintenance
- Sliding, mirrored back panels showcase food to shoppers from over 200 feet away, magnify lighting and enable your employees to better monitor food
- Includes 3" tall sign track and custom signs in color and menu items of your choice
- Infinite top & bottom heat controls
- Meets all health department requirements – temperature maintenance GUARANTEED!



TTN-2



Hot
Atlantic Food Bars
Hot & Cold Food Equipment Specialists

888-MEAL-SOLUTIONS (888-632-5765)

info@atlanticfoodbars.com

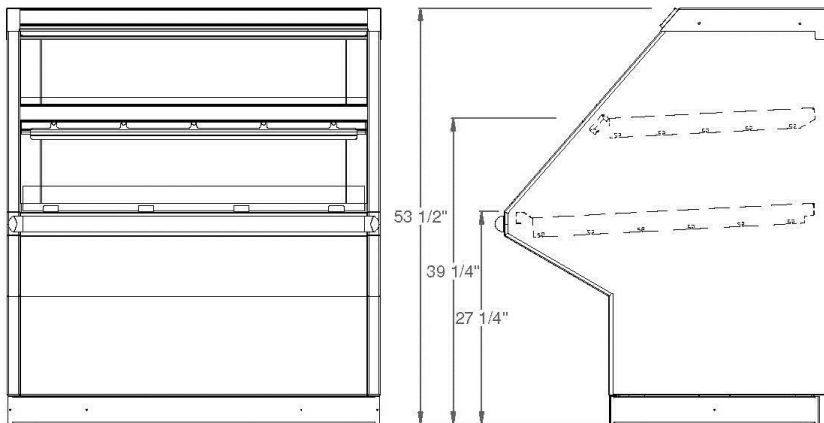
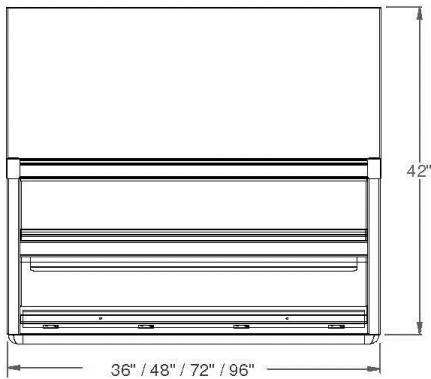
www.atlanticfoodbars.com



TTN Series

Titan Combination Full Service Bulk Hot Food & Self Service Rotisserie Chicken and Packaged Hot Food Display

Atlantic Food Bars TTN Series Hot Food Bars are covered by our INDUSTRY'S LONGEST WARRANTY – 2 years parts and labor. Warranty does not cover glass breakage, light bulbs, or abuse / misuse by operator. It is our company's policy and mission to continually improve our products, consequently, Atlantic Food Bars reserves the rights to change materials and specifications without notice.



| IP Code | O.A. Dimensions L" x W" x H" | Capacity – Upper Level: 12 x 20 pan openings Lower Level: Chicken Domes | Voltage |
|---------|---------------------------------|---|---------|
| TTN3644 | 3'-0" x 45" x 54" | 2 / 9 | 120/208 |
| TTN4844 | 4'-0" x 45" x 54" | 3 / 12 | 120/208 |
| TTN6044 | 5'-0" x 45" x 54" | 4 / 15 | 120/208 |
| TTN7244 | 6'-0" x 45" x 54" | 5 / 18 | 120/208 |
| TTN9644 | 8'-0" x 45" x 54" | 7 / 25 | 120/208 |

*Available in
curved profile
or profiles to
match other
manufacturers'
cases*



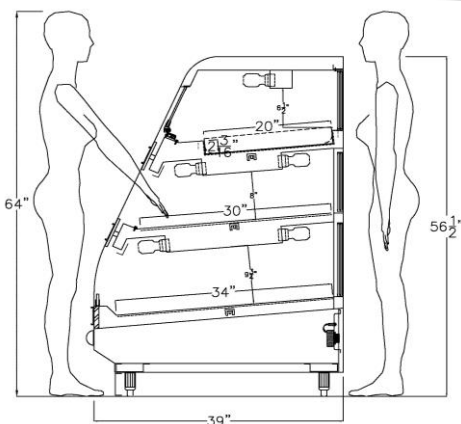
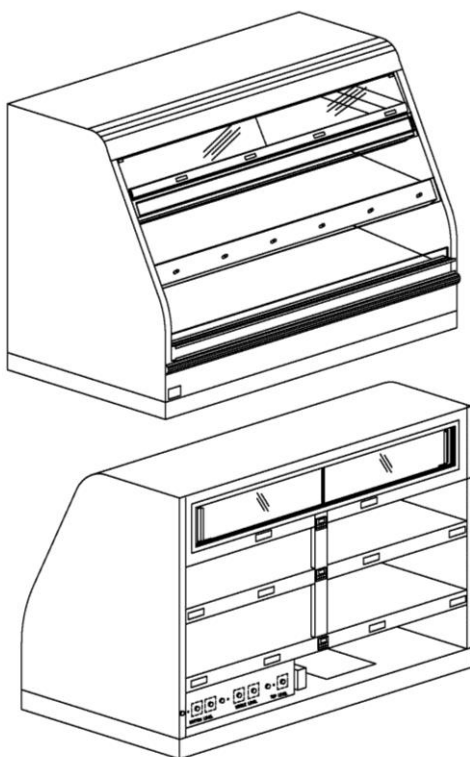
Atlantic Food Bars
Hot & Cold Food Equipment Specialists
888-MEAL-SOLUTIONS (888-632-5765)
info@atlanticfoodbars.com www.atlanticfoodbars.com



TTN2 Series

Titan Combination Full Service Bulk Hot Food & Self Service Rotisserie Chicken and Packaged Hot Food Display

Atlantic Food Bars TTN & TTN2 Series Hot Food Bars are covered by our INDUSTRY'S LONGEST WARRANTY – 2 years parts and labor. Warranty does not cover glass breakage, light bulbs, or abuse / misuse by operator. It is our company's policy and mission to continually improve our products, consequently, Atlantic Food Bars reserves the rights to change materials and specifications without notice.



| IP Code | O.A. Dimensions L" x W" x H" | Capacity – Upper Level : 12 x 20 pan openings Lower Levels :Chicken Domes | Voltage |
|-----------|---------------------------------|---|---------|
| TTN2-4839 | 4'-0" x 43" x 67" | 3 / 35 | 120/208 |
| TTN2-6039 | 5'-0" x 43" x 67" | 4 / 44 | 120/208 |
| TTN2-7239 | 6'-0" x 43" x 67" | 5 / 52 | 120/208 |
| TTN2-9639 | 8'-0" x 43" x 67" | 7 / 70 | 120/208 |

*Available in curved
profile or profiles to
match other
manufacturers' cases*



Atlantic Food Bars
Hot & Cold Food Equipment Specialists

888-MEAL-SOLUTIONS (888-632-5765)

info@atlanticfoodbars.com

www.atlanticfoodbars.com



Atlantic **HOT** Food Bars offers the **MOST** features, options & accessories - create the perfect hot case for your food service operation !

SLIDING REAR MIRRORED DOORS

Option for rear mirrored display doors on the top level offers see-through visibility to employees and a BEAUTIFUL mirrored image to the customer. Brilliant illumination shows off the food and makes it visible from 100 feet away.



**MATCH ANY PROFILE IN A LINEUP –
WHETHER THE ABUTTING CASE WAS BUILT
BY US OR A COMPETITOR!**

We will match specs to keep consistency within your store.



STAINLESS STEEL, POWDER COATED OR LAMINATED STEEL BODY – ANY COLOR

Select your body finish – all stainless steel, powder coated steel in any color of the spectrum or any laminate color or pattern or woodgrain. Match your store décor or do something daring with an explosive burst of color.



**POPULAR SIZES FROM 2' LONG TO 10' LONG
– CAN BE BUILT IN ANY SIZE DESIRED**



**Celebrating 70
Years in 2017!**

Atlantic Food Bars

Hot & Cold Food Equipment Specialists

888-MEAL-SOLUTIONS (888-632-5765)

info@atlanticfoodbars.com

www.atlanticfoodbars.com



Features & Options

TTN & TTN2 Series