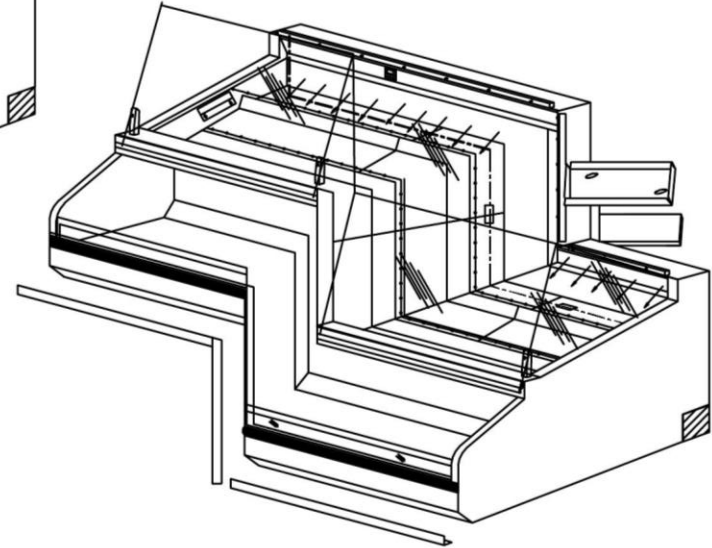
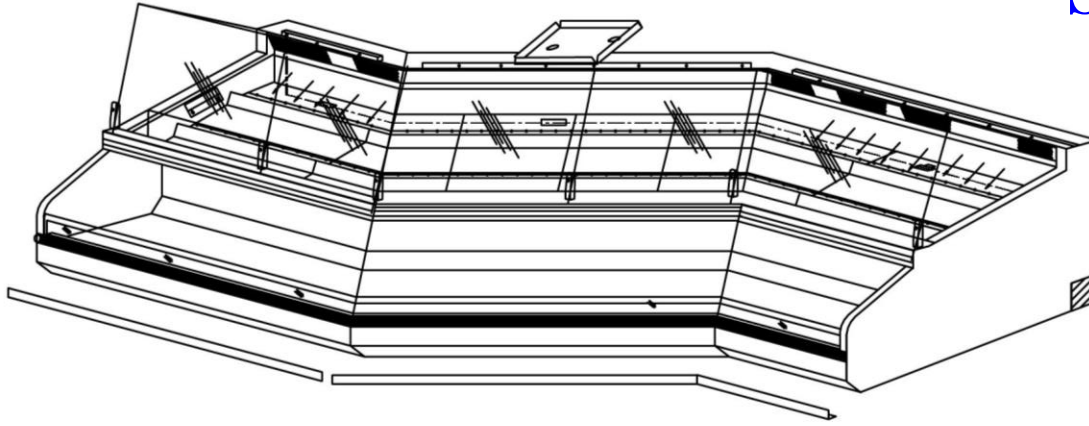


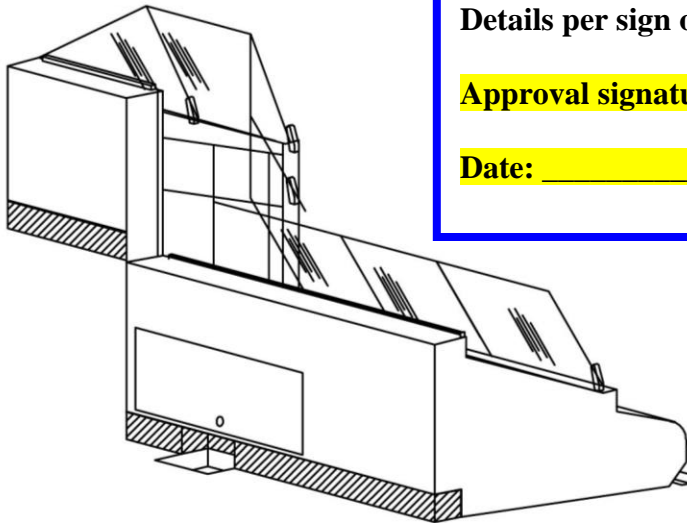
# Custom ICE ONLY NON-Refrigerated Seafood case



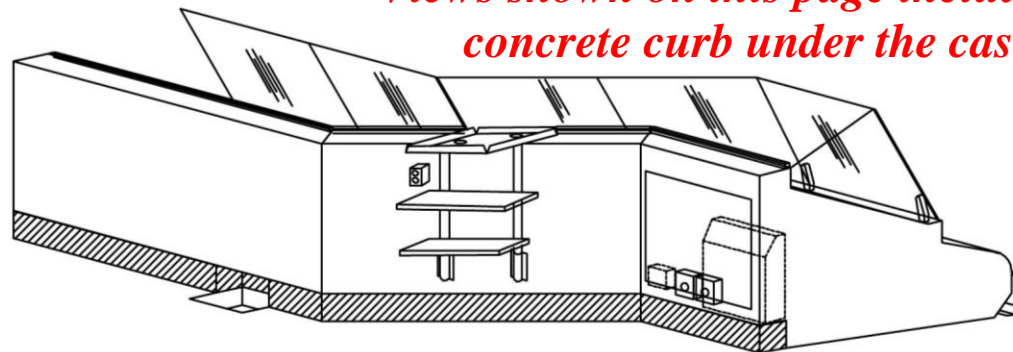
Details per sign off on page 6

Approval signature: \_\_\_\_\_

Date: \_\_\_\_\_

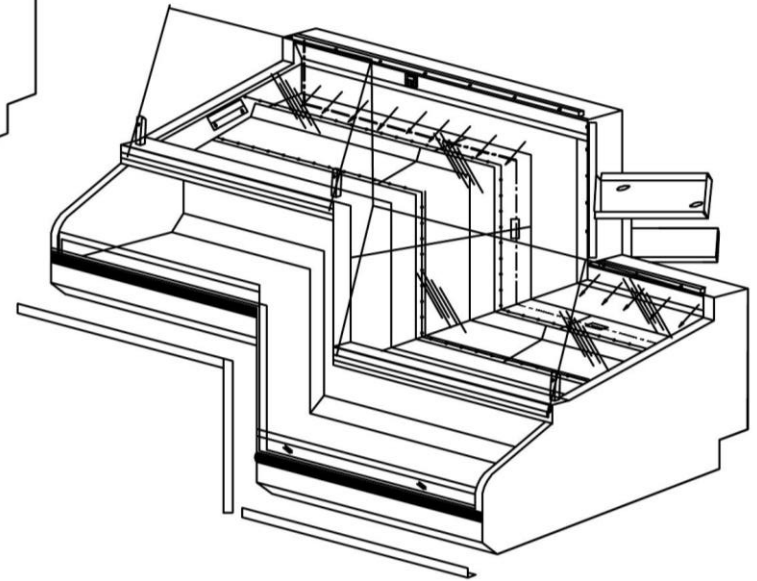
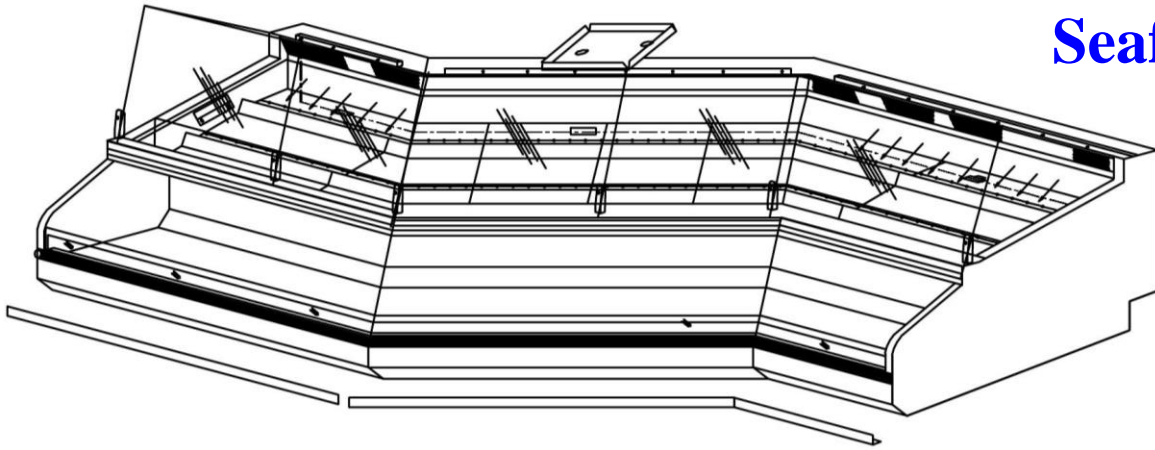


*Views shown on this page include the  
concrete curb under the case*



*Scroll down for more views*

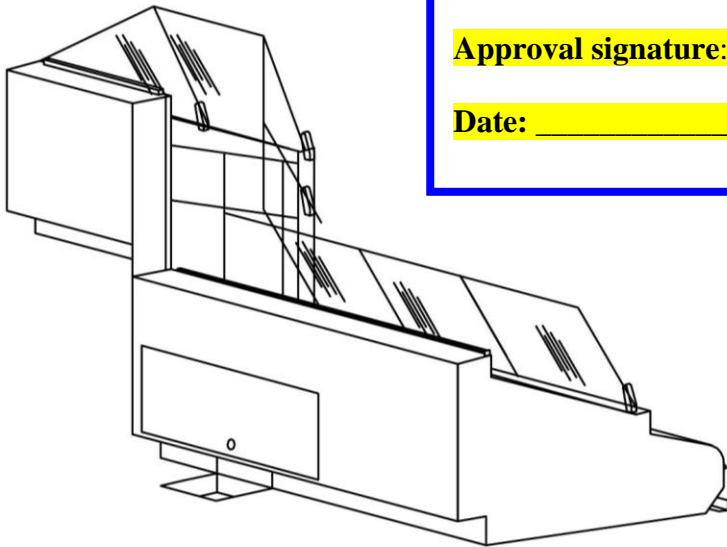
# Custom ICE ONLY NON-Refrigerated Seafood case



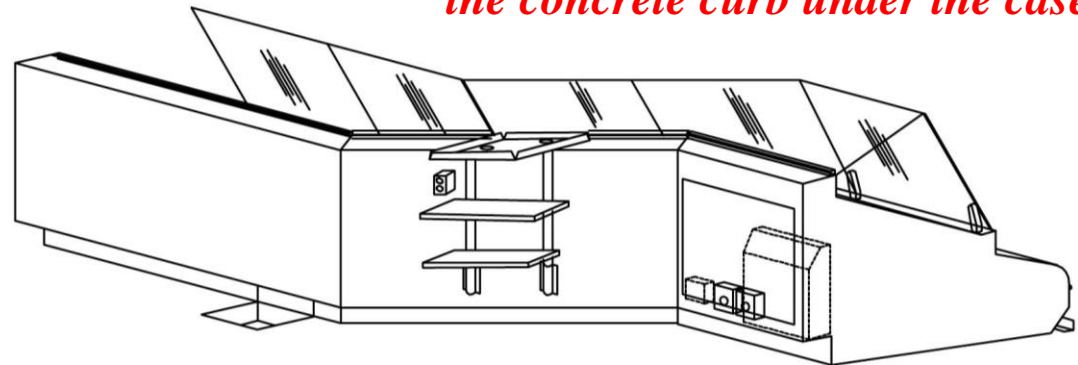
Details per sign off on page 6

Approval signature: \_\_\_\_\_

Date: \_\_\_\_\_



*Views shown on this page **DO NOT** include  
the concrete curb under the case*



**SEA**  
**Atlantic Food Bars**  
Seafood Merchandising  
Equipment Specialists

888-MEAL-SOLUTIONS (888-632-5765)

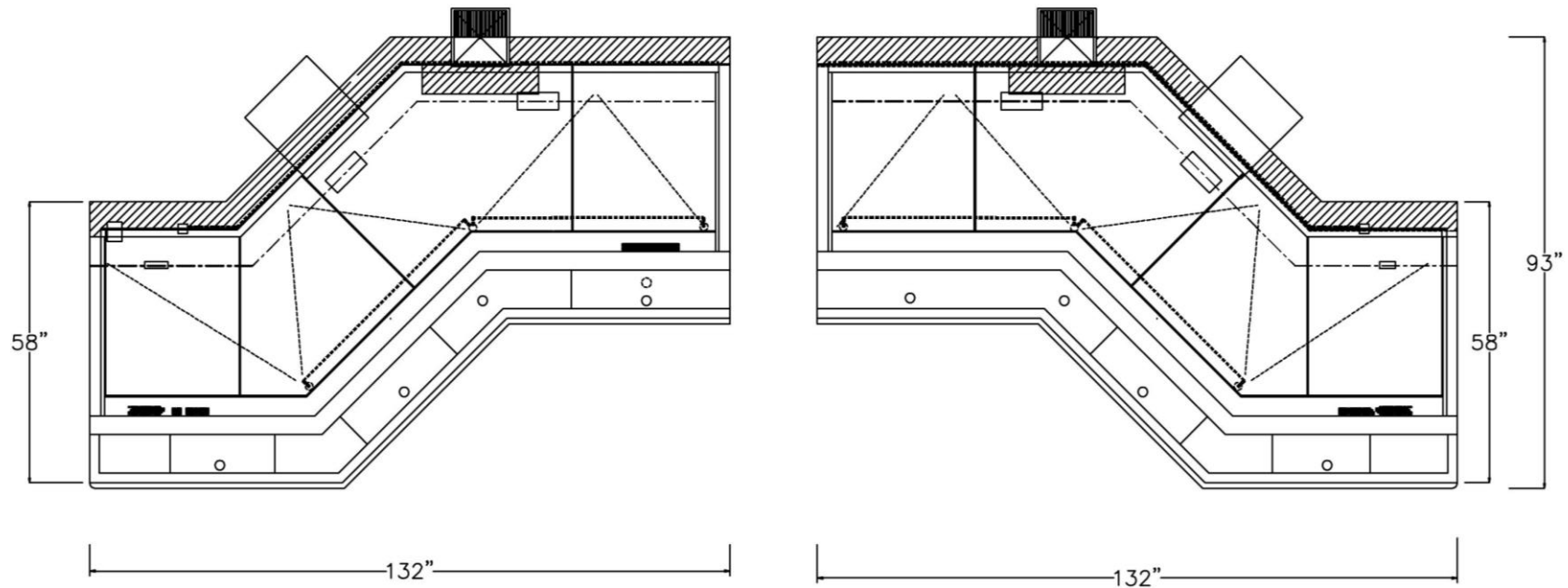
[www.atlanticfoodbars.com](http://www.atlanticfoodbars.com)

# Custom ICE ONLY NON-Refrigerated Seafood case

Details per sign off on page 6

Approval signature: \_\_\_\_\_

Date: \_\_\_\_\_



*Plan View*

*Scroll down for more views*



**SEA**  
**Atlantic Food Bars**  
**Seafood Merchandising**  
**Equipment Specialists**

888-MEAL-SOLUTIONS  
(888-632-5765)  
[www.atlanticfoodbars.com](http://www.atlanticfoodbars.com)

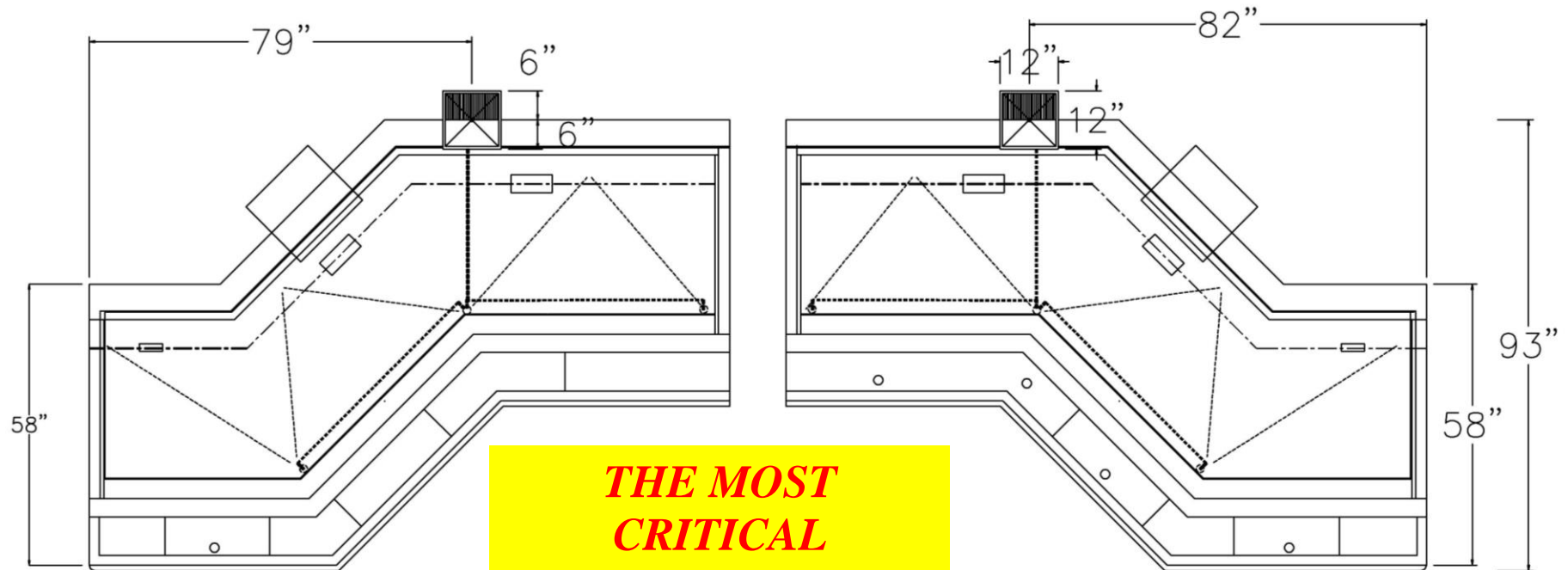
# Custom ICE ONLY NON-Refrigerated Seafood case

Details per sign off on page 6

Approval signature: \_\_\_\_\_

Date: \_\_\_\_\_

## *Plan View*



***THE MOST  
CRITICAL  
DIMENSION  
Floor sink location***

*Scroll down for more*



**SEA**  
**Atlantic Food Bars**  
**Seafood Merchandising**  
**Equipment Specialists**

888-MEAL-SOLUTIONS  
(888-632-5765)  
[www.atlanticfoodbars.com](http://www.atlanticfoodbars.com)

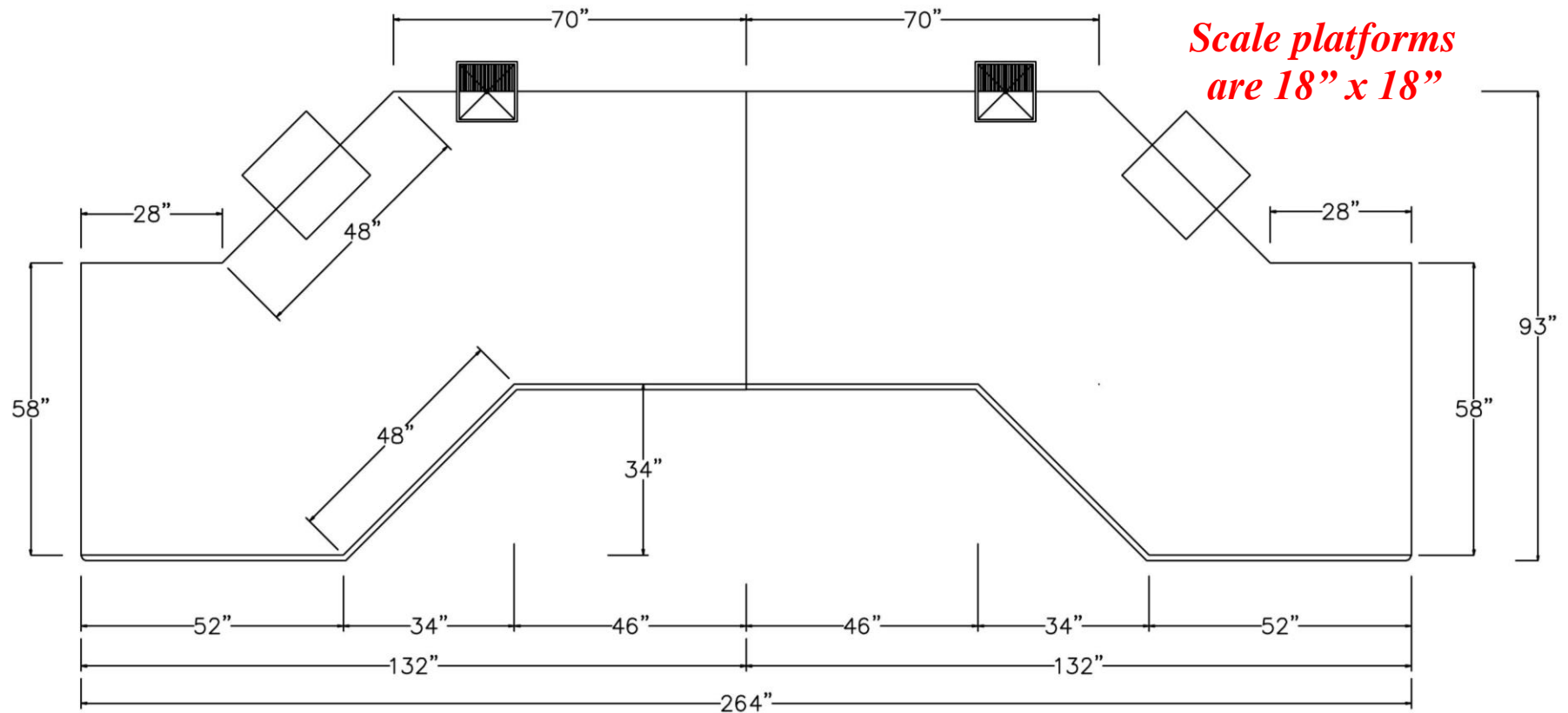
# Custom ICE ONLY NON-Refrigerated Seafood case

Details per sign off on page 6

Approval signature: \_\_\_\_\_

Date: \_\_\_\_\_

*Plan View*



*Scroll down for more*



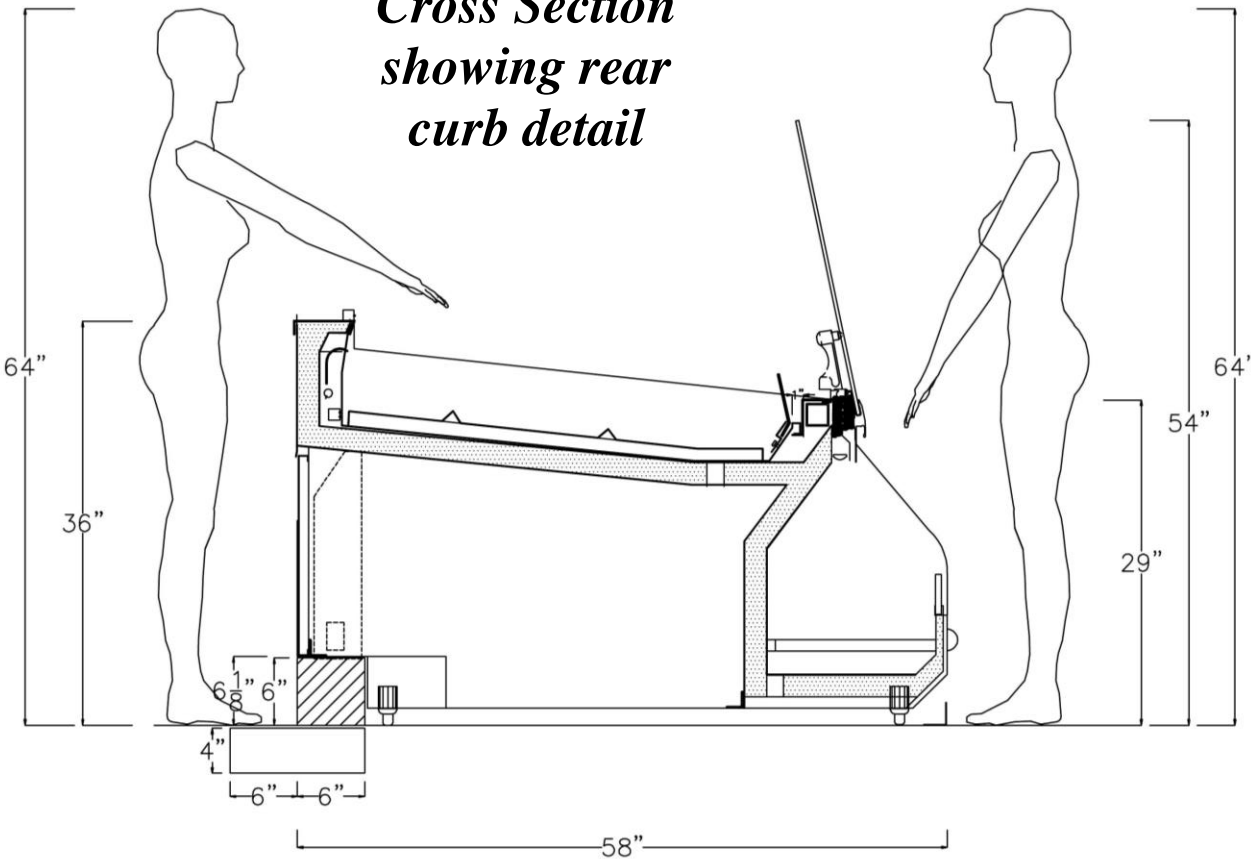
**SEA**  
**Atlantic Food Bars**  
**Seafood Merchandising**  
**Equipment Specialists**

888-MEAL-SOLUTIONS  
(888-632-5765)  
[www.atlanticfoodbars.com](http://www.atlanticfoodbars.com)



# Custom ICE ONLY NON-Refrigerated Seafood case

*Cross Section  
showing rear  
curb detail*



## Approval – Complete All Sections

### Colors:

Body: Stainless Steel    Bumper : \_\_\_\_\_

**Refrigeration** : none

**Electric** for scales : Voltage 120V Single Phase

### Delivery

Site: Loading Dock \_\_\_\_ Ground Level \_\_\_\_

Delivery hours : \_\_\_\_\_

Depth of case is shown on plan view and will fit through narrowest space between delivery point and install location Yes \_\_\_\_ No \_\_\_\_ If no – CALL US ASAP

Approval signature: \_\_\_\_\_

Date: \_\_\_\_\_



**SEA**  
**Atlantic Food Bars**  
**Seafood Merchandising**  
**Equipment Specialists**

888-MEAL-SOLUTIONS  
(888-632-5765)  
[www.atlanticfoodbars.com](http://www.atlanticfoodbars.com)

888-MEAL-SOLUTIONS  
(888-632-5765)  
[www.atlanticfoodbars.com](http://www.atlanticfoodbars.com)

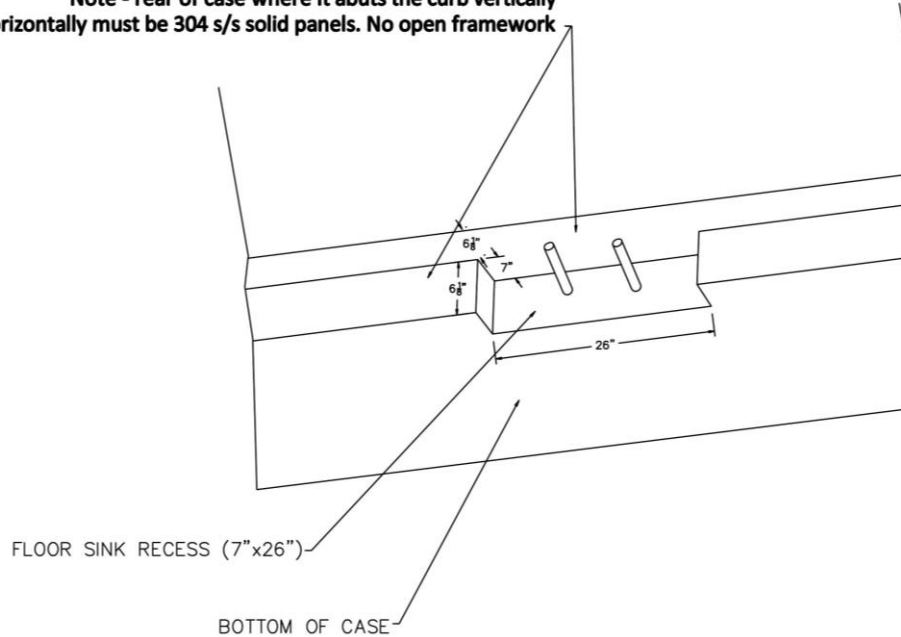
# Custom ICE ONLY NON-Refrigerated Seafood case

Details per sign off on page 6

Approval signature: \_\_\_\_\_

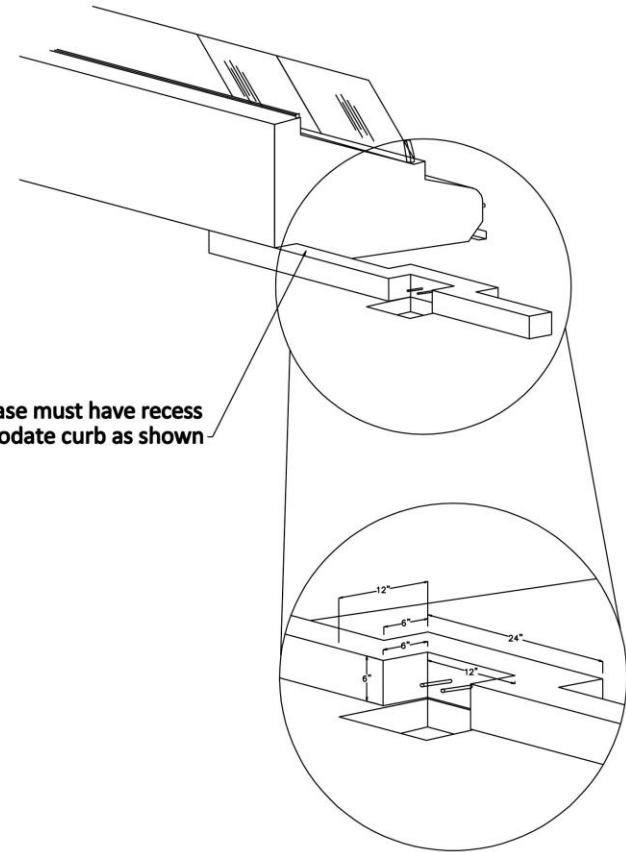
Date: \_\_\_\_\_

Note - rear of case where it abuts the curb vertically and horizontally must be 304 s/s solid panels. No open framework



Drain Pipes MUST be 1-1/2" OD PVC and exit the case as show  
Curb will have holes cut through it into which these pipes will  
insert and pass through to floor sink

Employee side of case must have recess  
to accommodate curb as shown



**SEA**  
**Atlantic Food Bars**  
**Seafood Merchandising**  
**Equipment Specialists**

888-MEAL-SOLUTIONS  
(888-632-5765)  
[www.atlanticfoodbars.com](http://www.atlanticfoodbars.com)