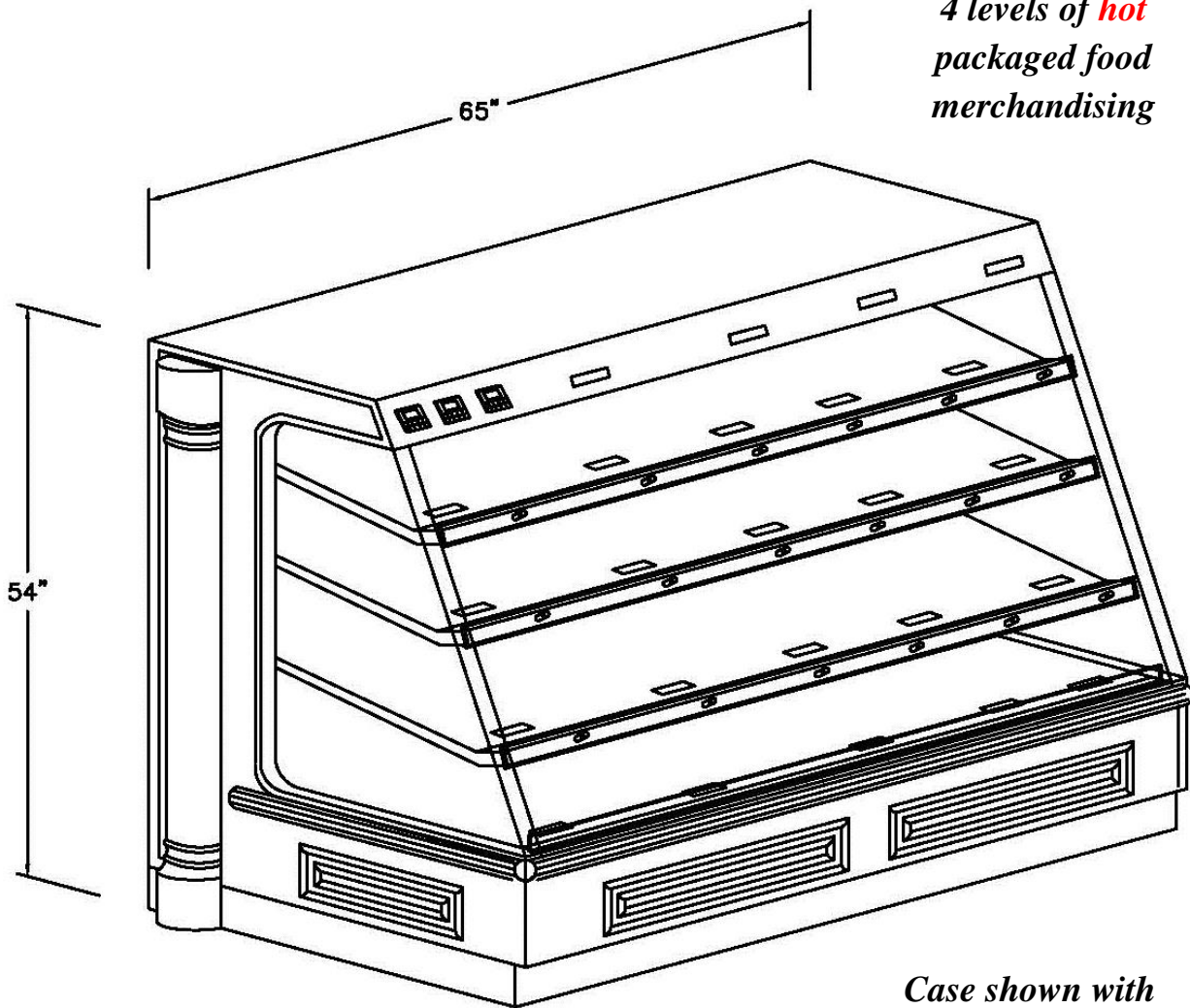


# Hot Grab & Go Chicken

## Estate Series

IP # WRGCL6534  
5'-5" L x 35" D x 54" H



4 levels of *hot*  
packaged food  
merchandising

**SCROLL DOWN – PAGE 2 HAS  
ADDITIONAL DETAILS**

*Case shown with  
clear view end  
panels and  
column/picture  
frame molding*

### Approval – Complete All Sections

#### Colors:

Body: Laminate : Yes Mfr. \_\_\_\_\_  
Color \_\_\_\_\_ # \_\_\_\_\_  
If woodgrain laminate – direction of  
grain Vertical \_\_\_ Horizontal \_\_\_

Bumper: \_\_\_\_\_

#### Electric :

Voltage 120/208V  
Phase : Single \_\_\_ Three \_\_\_  
Source : Ceiling \_\_\_ Floor \_\_\_

#### Delivery

Site: Loading Dock \_\_\_ Ground Level \_\_\_  
Delivery hours : \_\_\_\_\_  
Depth of case is 35" which will fit through  
narrowest space between delivery point and install  
location Yes \_\_\_ No \_\_\_ If no – CALL US ASAP

Approval signature: \_\_\_\_\_

Date: \_\_\_\_\_

*See last page for specifications table – your  
signature above verifies the installation site has the  
required power as shown*



**Atlantic Food Bars**  
Your **HOT & COLD** Food Equipment Specialist !  
888-MEAL-SOLUTIONS (888-632-5765)  
[www.atlanticfoodbars.com](http://www.atlanticfoodbars.com)

# Hot Grab & Go Chicken

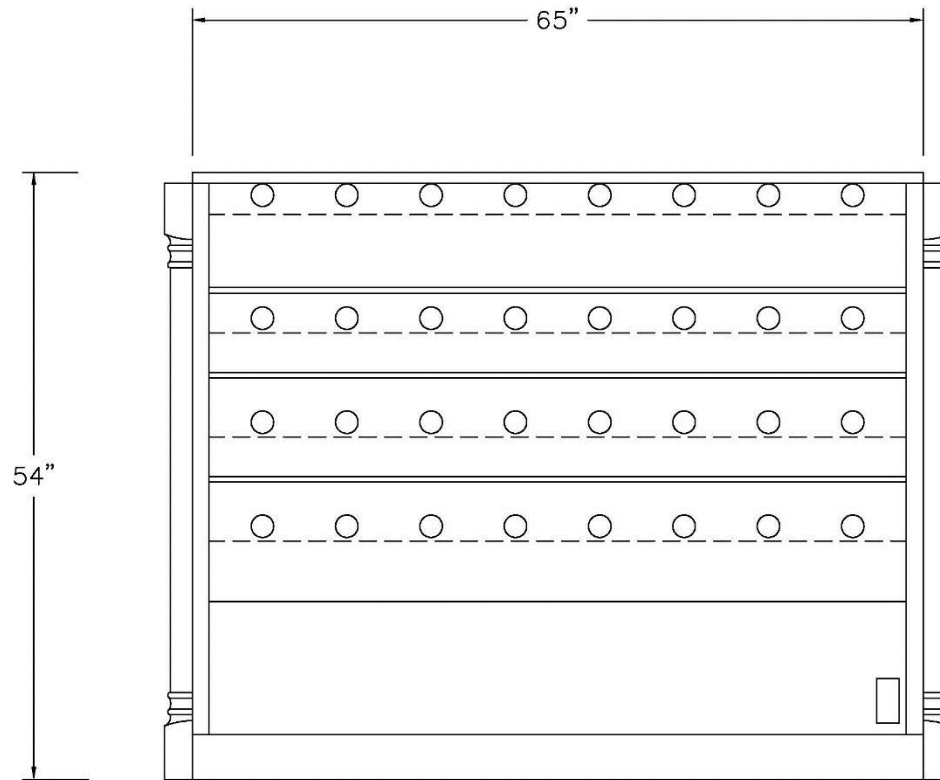
## Estate Series

IP # WRGCL6534  
5'-5" L x 35" D x 54" H

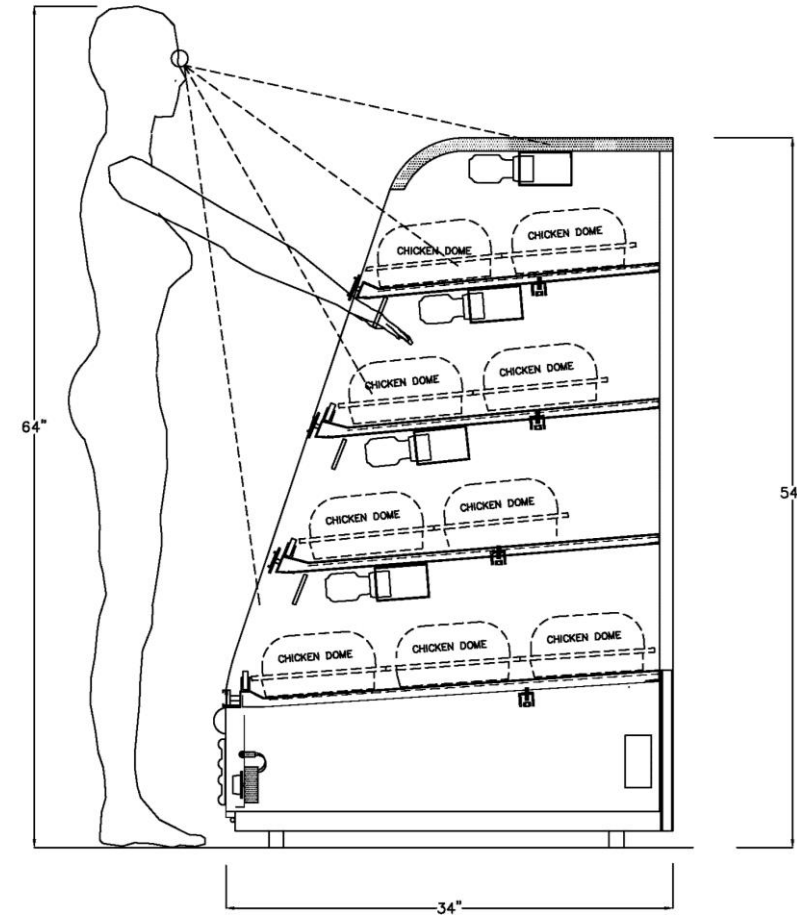
Details per sign off on page 1 and  
specifications on last page

Approval signature: \_\_\_\_\_

Date: \_\_\_\_\_



*Elevation*



*Cross Section*

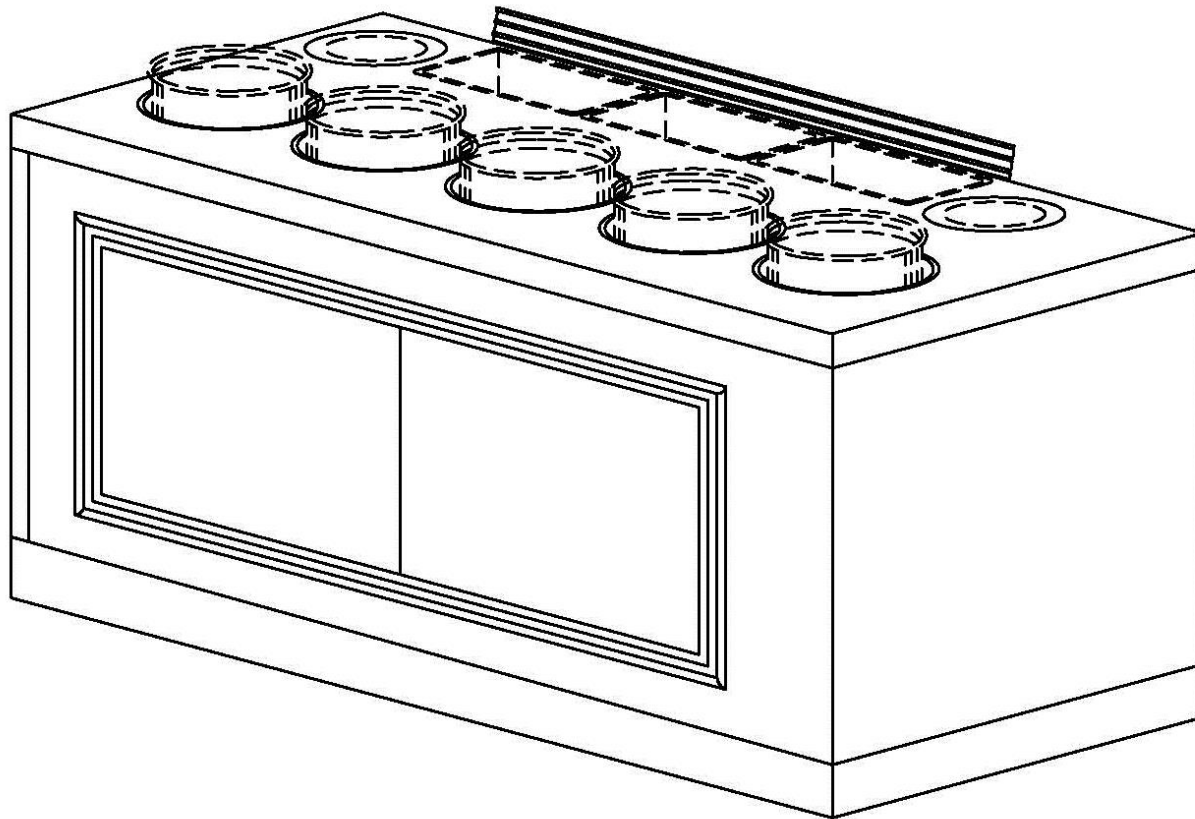
Internal Part #	Custom Description	Dimensions	Voltage	Amps 1 Ph/3 Ph	Chicken Capacity
WRGCL6534	65" Four-Tier Hot Packaged Food Merchandiser	65" L x 35" D x 54" H	120/208	45.8/26.4	56



**Atlantic Food Bars**  
Your **HOT & COLD** Food Equipment Specialist!  
888-MEAL-SOLUTIONS (888-632-5765)  
[www.atlanticfoodbars.com](http://www.atlanticfoodbars.com)

# Hot Soup Bar Estate Series

IP # SW6530  
5'-5" L x 30" D x 34" H



**SCROLL DOWN – PAGE 2 HAS  
ADDITIONAL DETAILS**

## Approval – Complete All Sections

### Colors:

Body: Laminate : Yes Mfr. \_\_\_\_\_

Color \_\_\_\_\_ # \_\_\_\_\_

If woodgrain laminate – direction of  
grain Vertical \_\_\_ Horizontal \_\_\_

Bumper: \_\_\_\_\_

### Electric :

Voltage 208V

Phase : Single \_\_\_ Three \_\_\_

Source : Ceiling \_\_\_ Floor \_\_\_

### Delivery

Site: Loading Dock \_\_\_ Ground Level \_\_\_

Delivery hours : \_\_\_\_\_

Depth of case is 30" which will fit through  
narrowest space between delivery point and install  
location Yes \_\_\_ No \_\_\_ If no – CALL US ASAP

Approval signature: \_\_\_\_\_

Date: \_\_\_\_\_

See last page for specifications table – your  
signature above verifies the installation site has the  
required power as shown



**Atlantic Food Bars**

Your **HOT & COLD** Food Equipment Specialist !

888-MEAL-SOLUTIONS (888-632-5765)

[www.atlanticfoodbars.com](http://www.atlanticfoodbars.com)

# Hot Soup Bar

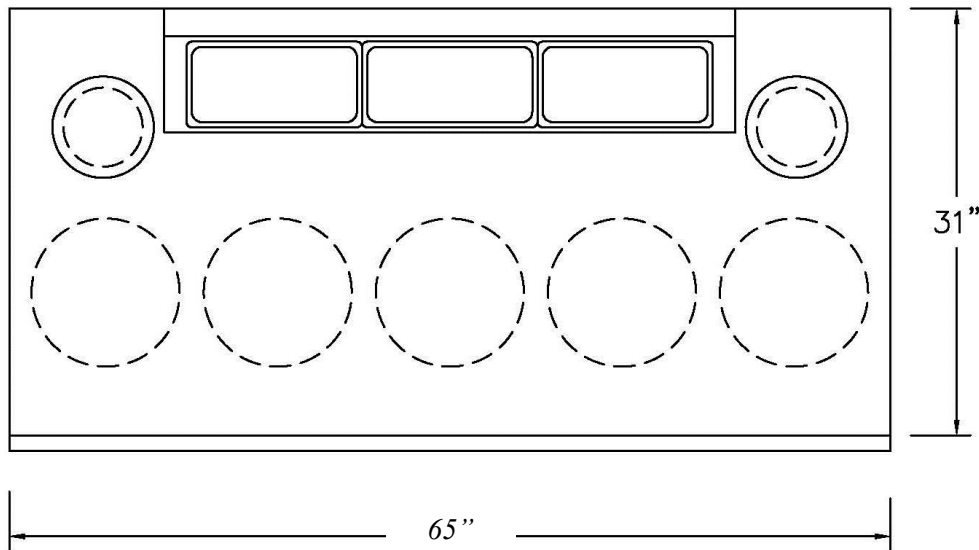
## Estate Series

IP # SW6530  
5'-5" L x 30" D x 34" H

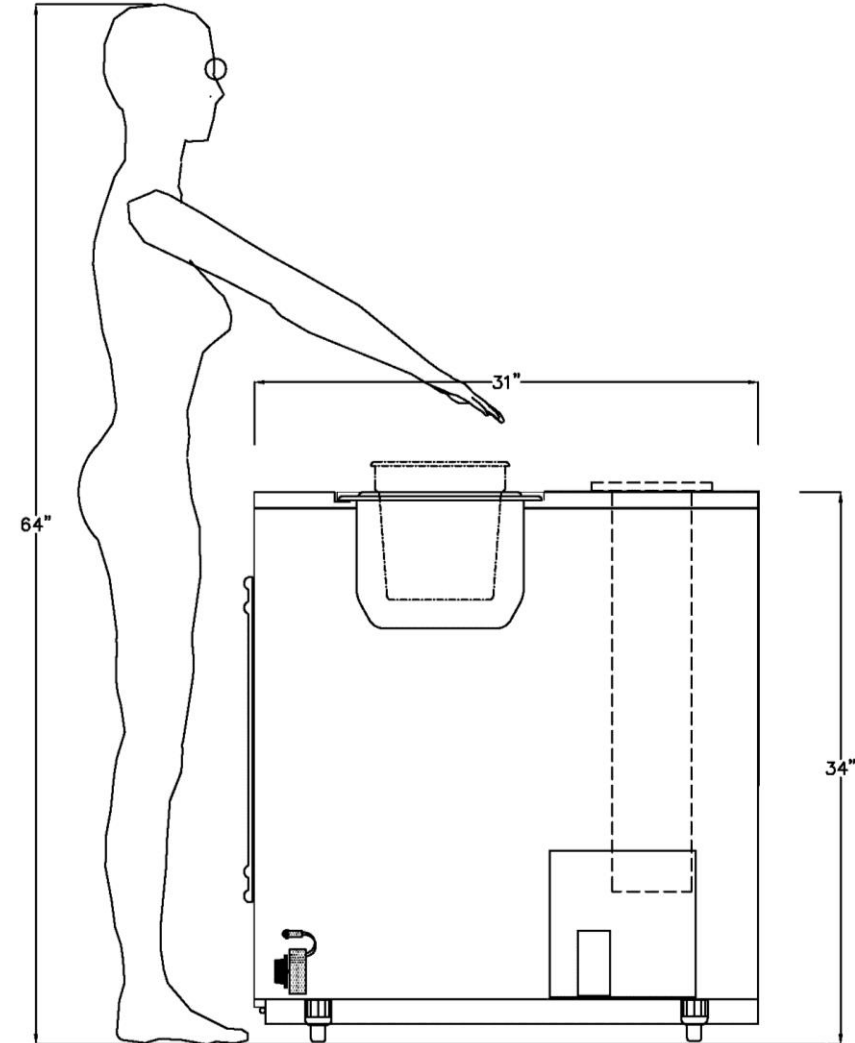
Details per sign off on page 1 and  
specifications on last page

Approval signature: \_\_\_\_\_

Date: \_\_\_\_\_



*Plan View*



*Cross Section*

Internal Part #	Custom Description	Dimensions	Voltage	Amps 1 Ph	11-qt Soup Well Capacity
SW6530	65" Five-Well Hot Soup Bar	65" L x 30" D x 34" H	208	14.9	5



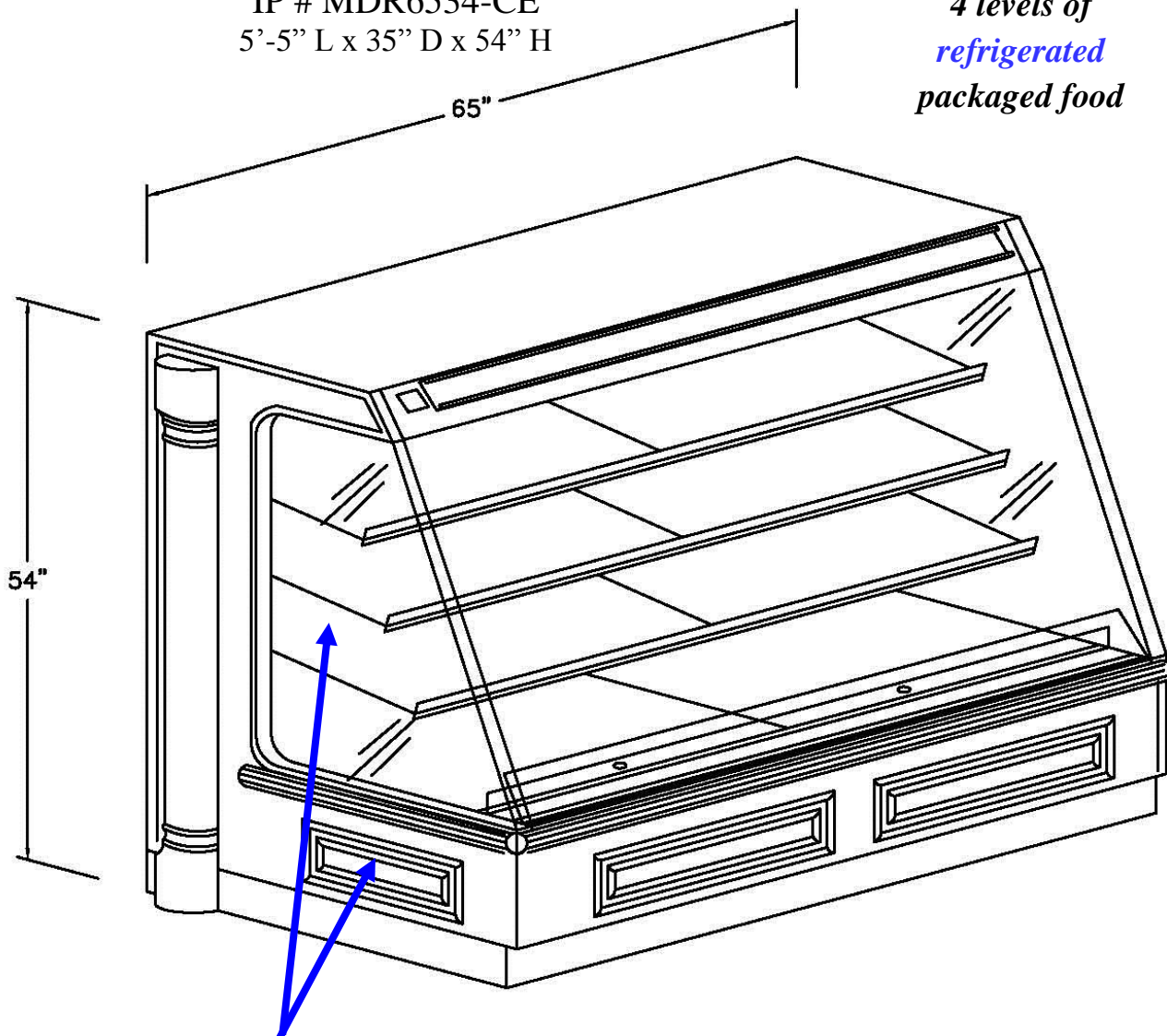
**Atlantic Food Bars**  
Your **HOT & COLD** Food Equipment Specialist!  
888-MEAL-SOLUTIONS (888-632-5765)  
[www.atlanticfoodbars.com](http://www.atlanticfoodbars.com)



# End Cap Refrigerated Display Case Estate Series

IP # MDR6534-CE  
5'-5" L x 35" D x 54" H

4 levels of  
refrigerated  
packaged food



Case shown with clear end panel and  
side picture frame molding. 2nd case  
has plain, solid end panels.

**SCROLL DOWN – PAGE 2 HAS  
ADDITIONAL DETAILS**

## Approval – Complete All Sections

### Colors:

Body: Laminate : ☒ Mfr. \_\_\_\_\_  
Color \_\_\_\_\_ # \_\_\_\_\_  
If woodgrain laminate – direction of  
grain Vertical ☐ Horizontal ☐

Bumper: \_\_\_\_\_

### Refrigeration:

Remote ☒ Refrigerant \_\_\_\_\_

### Electric :

Voltage 120V  
Phase : Single ☒  
Source : Ceiling ☐ Floor ☐

### Delivery

Site: Loading Dock ☐ Ground Level ☐  
Delivery hours : \_\_\_\_\_  
Depth of case is 35" which will fit through  
narrowest space between delivery point and install  
location Yes ☐ No ☐ If no – CALL US ASAP

Approval signature: \_\_\_\_\_

Date: \_\_\_\_\_

See last page for specifications table – your  
signature above verifies the installation site has the  
required power as shown



**Atlantic Food Bars**  
Your **HOT & COLD** Food Equipment Specialist !  
888-MEAL-SOLUTIONS (888-632-5765)  
[www.atlanticfoodbars.com](http://www.atlanticfoodbars.com)

# End Cap Refrigerated Display Case

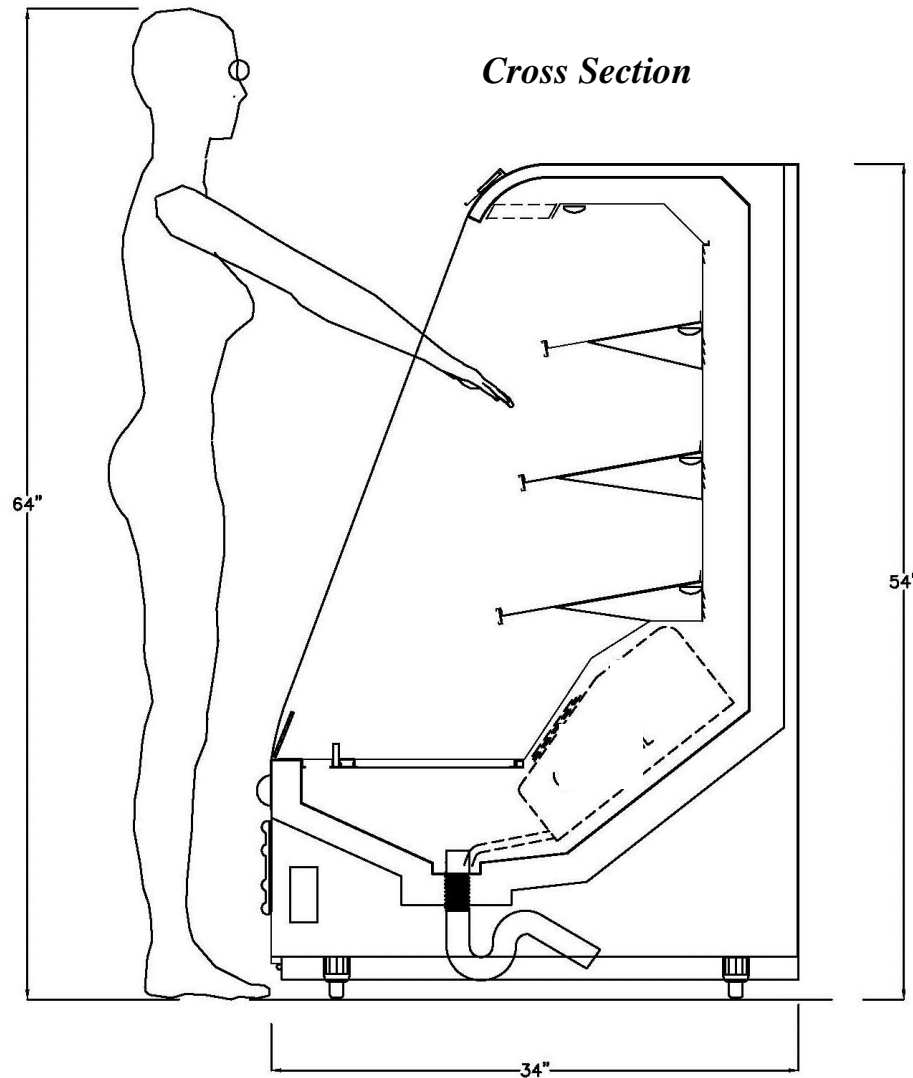
## Estate Series

IP # MDR6534-CE  
5'-5" L x 35" D x 54" H

Details per sign off on page 1 and  
specifications on last page

Approval signature: \_\_\_\_\_

Date: \_\_\_\_\_



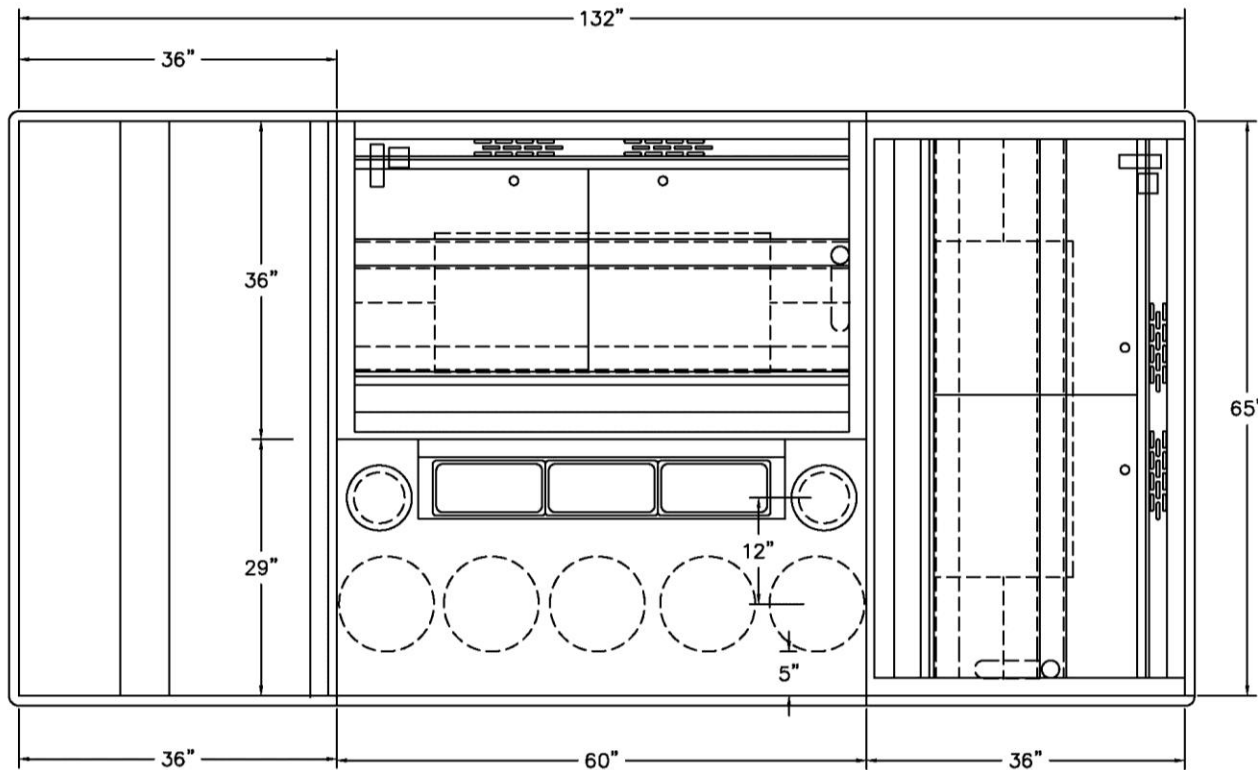
Internal Part #	Custom Description	Dimensions	Voltage	Remote Refrigeration	BTU
				Amps 1 Ph	
MDR6534-CE	65" Four-Tier Refrigerated Packaged Food Merchandiser	65" L x 35" D x 54" H	120	4.4	6,000



**Atlantic Food Bars**  
Your **HOT & COLD** Food Equipment Specialist !  
888-MEAL-SOLUTIONS (888-632-5765)  
[www.atlanticfoodbars.com](http://www.atlanticfoodbars.com)

# Island Line-Up

## Estate Series



### Approval – Complete All Sections

#### Colors:

Body: Laminate : \_\_\_\_ Mfr. \_\_\_\_

Color \_\_\_\_ # \_\_\_\_

If woodgrain laminate – direction of  
grain Vertical \_\_\_\_ Horizontal \_\_\_\_

Bumper: \_\_\_\_

#### Refrigeration:

Remote \_\_\_\_ Refrigerant \_\_\_\_

#### Electric :

Voltage 120V

Phase : Single \_\_\_\_ Three \_\_\_\_

Source : Ceiling \_\_\_\_ Floor \_\_\_\_

#### Delivery

Site: Loading Dock \_\_\_\_ Ground Level \_\_\_\_

Delivery hours : \_\_\_\_

Depth of case is 37" which will fit through  
narrowest space between delivery point and install  
location Yes \_\_\_\_ No \_\_\_\_ If no – CALL US ASAP

Approval signature: \_\_\_\_

Date: \_\_\_\_

See last page for specifications table – your  
signature above verifies the installation site has the  
required power as shown



**Atlantic Food Bars**

Your **HOT & COLD** Food Equipment Specialist !

888-MEAL-SOLUTIONS (888-632-5765)

[www.atlanticfoodbars.com](http://www.atlanticfoodbars.com)