

Convertible Self-To-Full Service

Hot Food Bar
HFB-CSZ Series

*Scroll down
for more*



Serving The
Foodservice Industry
For Over 70 Years!



Atlantic Food Bars
Hot & Cold Food
Merchandising Equipment
Specialists

*Hot Food Bar in
Full Service Mode*

CLICK TO PLAY VIDEO DEMO OF
CONVERTIBLE SNEEZEGUARD !



888-MEAL-SOLUTIONS
(888-632-5765)
www.atlanticfoodbars.com

Convertible Self-To-Full Service

Hot Food Bar HFB-CSZ Series

Self Service Mode

CLICK TO PLAY VIDEO DEMO OF
CONVERTIBLE SNEEZEGUARD !



Full Service Mode

CLICK TO PLAY VIDEO DEMO OF
CONVERTIBLE SNEEZEGUARD !



Serving The
Foodservice Industry
For Over 70 Years!

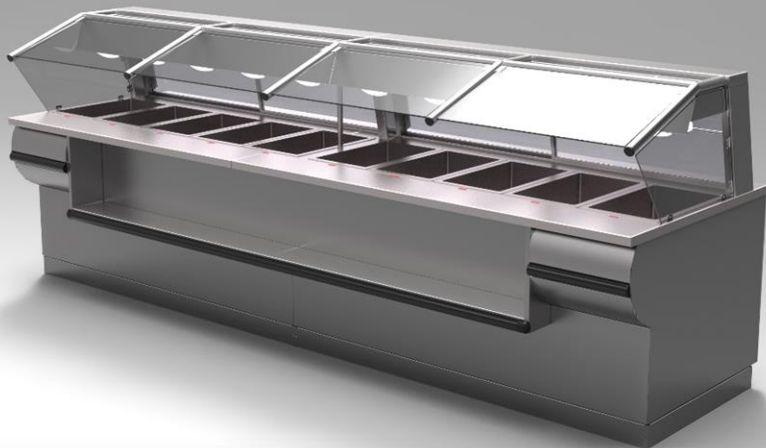


HOT
Atlantic Food Bars
**Hot Food Merchandising
Equipment Specialists**

Scroll down for more

888-MEAL-SOLUTIONS
(888-632-5765)
www.atlanticfoodbars.com

***Build your sales and profits with our
HFB Series Self-Service Hot Food Bars !
Scroll down to see why Atlantic HOT Food Bars
is the industry leader, with the broadest offering of
standard and custom self-service hot food bars.***



You tell us the size, and we either have a standard model to meet your needs or we will design a hot food bar, to your desired length (to within 1/16"). Custom sizes are NO PROBLEM ! Our HFB series offers wet or dry heat so your food will stay fresh and maintain critical temperatures. Our HFB Series GUARANTEES temperature maintenance, and keeps your food looking fresh and inviting.

SELF-SERVICE SELLS MORE !!!

Our base model includes infinite & individual controls on EACH hot well, infinite & individual FULL COVERAGE heat control on the top, rear mirrored display offering see-through visibility to employees and a BEAUTIFUL mirrored image to the customer. Brilliant illumination shows off the food and makes it visible from 100 feet away.



Atlantic Food Bars
Hot & Cold Food Equipment Specialists

888-MEAL-SOLUTIONS (888-632-5765)

info@atlanticfoodbars.com

www.atlanticfoodbars.com



HFB Series Self-Service Hot Food Bar

HFB Series

Self-Service Hot Food Bar



Options

- ☐ Autofill hot wells
- ☐ Magnetic induction hot wells
- ☐ 12" x 27" hot wells
- ☐ Integral soup wells
- ☐ Integral rice cooker
- ☐ Hot Grab & Go Decks
- ☐ Front merchandising shelf
- ☐ Front control panel for end cap or wall use
- ☐ Convertible full / self service sneezeguard
- ☐ Sliding rear mirrored doors in lieu of fixed rear mirrors for in-line use
- ☐ No-visible-means-of-support sneezeguard design is fully polished edge tempered glass with torsion hardware on angled side glass – stays in place when you let go at any angle – convenient and safe
- ☐ Rear poly work shelf on drop hinges
- ☐ Extended rear work counter
- ☐ Laminated steel body in color or woodgrain to match your store décor
- ☐ Powder coated steel base to match your adjacent cases and store decor
- ☐ Curved base front profile
- ☐ Flat base front profile
- ☐ Match your case lineup height
- ☐ Match your abutting case profiles

Standard Features

- Infinite & individual controls on bottom heat of each well keeps food fresh and health departments happy
- Individual 12" x 20" wells offer maximum merchandising per linear foot
- Wet or dry operation on hot wells
- Hot food wells accept 2", 4" or 6" deep pans
- Individual drains and valves on each hot well
- Individual top heat control for each well with dedicated heat lamps, each well has its own adjustable control
- FULL COVERAGE top heat assures critical temperatures
- Frameless glass sneezeguard on tubular lift up hardware
- Fixed rear mirrors
- Heavy 14 gauge 304 stainless steel countertop
- Brilliant interior lighting enhances food display
- Low profile body
- Body & bumper available in stainless steel or colors of your choice
- Available in lengths from 4' to 24'



Hot
Atlantic Food Bars
Hot & Cold Food Equipment Specialists

888-MEAL-SOLUTIONS (888-632-5765)

info@atlanticfoodbars.com

www.atlanticfoodbars.com



HFB Series

Self-Service Hot Food Bar



Hot Atlantic Food Bars
Hot & Cold Food Equipment Specialists

888-MEAL-SOLUTIONS (888-632-5765)

info@atlanticfoodbars.com

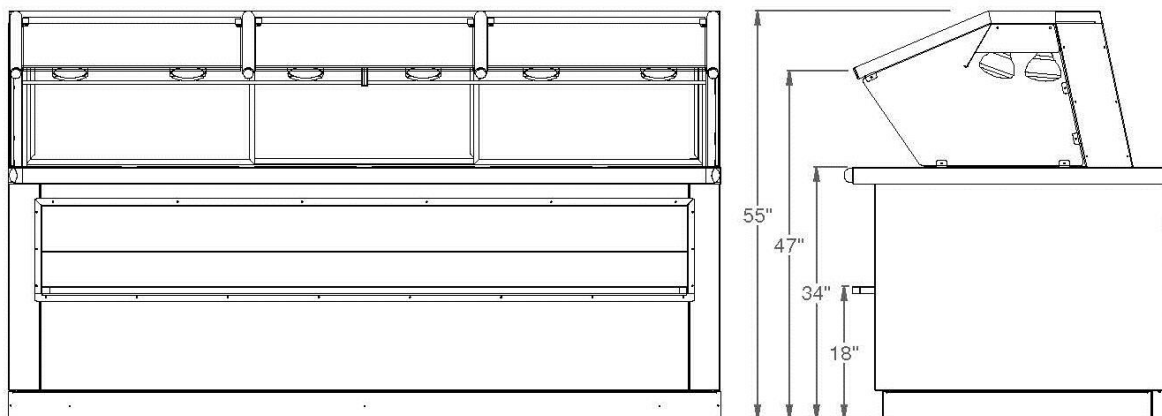
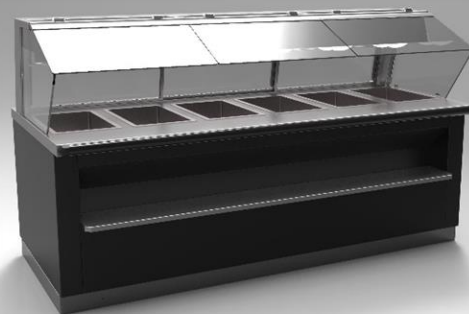
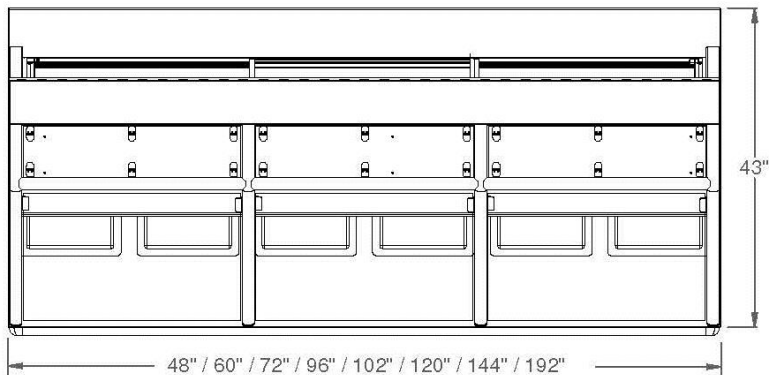
www.atlanticfoodbars.com



HFB Series

Self-Service Hot Food Bar

Atlantic Food Bars HFB Series Hot Food Bars are covered by our INDUSTRY'S LONGEST WARRANTY – 1 year parts and labor. Warranty does not cover glass breakage, light bulbs, or abuse / misuse by operator. It is our company's policy and mission to continually improve our products, consequently, Atlantic Food Bars reserves the rights to change materials and specifications without notice.



<i>IP Code</i>	<i>O.A. Dimensions L" x W" x H"</i>	<i>Capacity 12 x 20 pan openings</i>	<i>Voltage</i>
HFB4843	4'-0"x 44"x 53"	3	120/208
HFB6043	5'-0"x 44"x 53"	4	120/208
HFB7243	6'-0"x 44"x 53"	5	120/208
HFB9643	8'-0"x 44"x 53"	6	120/208
HFB10843	9'-0"x 44"x 53"	7	120/208
HFB12043	10'-0"x 44"x 53"	8	120/208
HFB13243	11'-0"x 44"x 53"	9	120/208
HFB14443	12'-0"x 44"x 53"	10	120/208



Hot & Cold Food Equipment Specialists

888-MEAL-SOLUTIONS (888-632-5765)

info@atlanticfoodbars.com

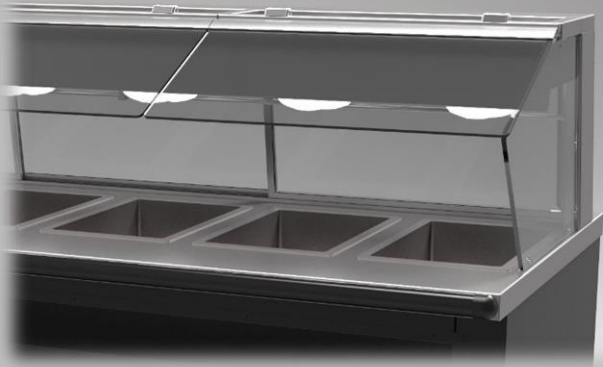
www.atlanticfoodbars.com



Atlantic **HOT Food Bars offers the MOST features, options & accessories - create the perfect hot case for your food service operation !**

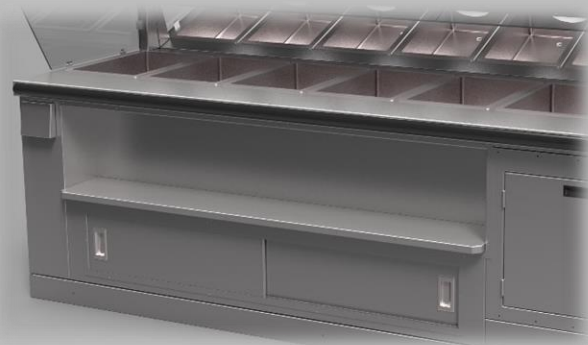
WET/DRY, AUTOFILL OR MAGNETIC INDUCTION HOT FOOD WELLS

Run your hot wells with or without water. Based upon considerations for cost, maintenance and ease of use, we build to meet your needs and specifications.



FRONT MERCHANDISING & CONTAINER SHELF

Build impulse sales in this BONUS merchandising area. Neater and cleaner than stacking dry product on the floor or on racks in front of case. Keep the food containers organized and conveniently located without wasting valuable floor space.



CONVERTIBLE FULL TO SELF SERVICE SNEEZEGUARD

Sell food full service or self service based upon traffic patterns and time of the day. Easy lift up mechanism – NO TOOLS REQUIRED - takes the work out of this multi-function, convertible case.



ADD SLIDING DOORS TO SELL ETHNIC FOOD IN A STEAMED ENVIRONMENT- TAMALES & MORE!

Enclosing the food creates a steamy, appealing impression that gives customers a unique, fresh display from which to serve themselves!



Features & Options
HFB Series



Hot
Atlantic Food Bars
Hot & Cold Food Equipment Specialists

888-MEAL-SOLUTIONS (888-632-5765)

info@atlanticfoodbars.com www.atlanticfoodbars.com



NO-VISIBLE-MEANS-OF-SUPPORT SNEEZEGUARD

Your food deserves the most visible venue to build impulse sales and PROFITS ! Our sneezeguard design is barely visible, with minimal structure, clear tempered glass top panes and glass corner transitions.



LED LIGHTING PACKAGE WITH RADIANT TOP HEAT

An alternative to our standard screw in safety coated heat lamp bulbs is our low profile LED Lighting Package with energy efficient and long life LED fixtures and radiant top heat

CUSTOM PAN RAIL CONFIGURATIONS

If your space has limitations as to the footprint, we are masters of squeezing the most effective and efficient food display area possible. Build sales per square foot.



HOT WELLS ACCOMMODATE 2" or 4" or 6" DEEP FOOD PANS

Tailor your food capacity to minimize shrink and maximize sales. Use full, half, half long, third, quarter, sixth or ninth size food pan.



Features & Options
HFB Series



HOT
Atlantic Food Bars
Hot & Cold Food Equipment Specialists

888-MEAL-SOLUTIONS (888-632-5765)

info@atlanticfoodbars.com

www.atlanticfoodbars.com



SOLID SURFACE COUNTERTOPS

Our standard stainless steel countertops can be upgraded to add color and patterns of countless choices of solid surface from the industry's major manufacturers.



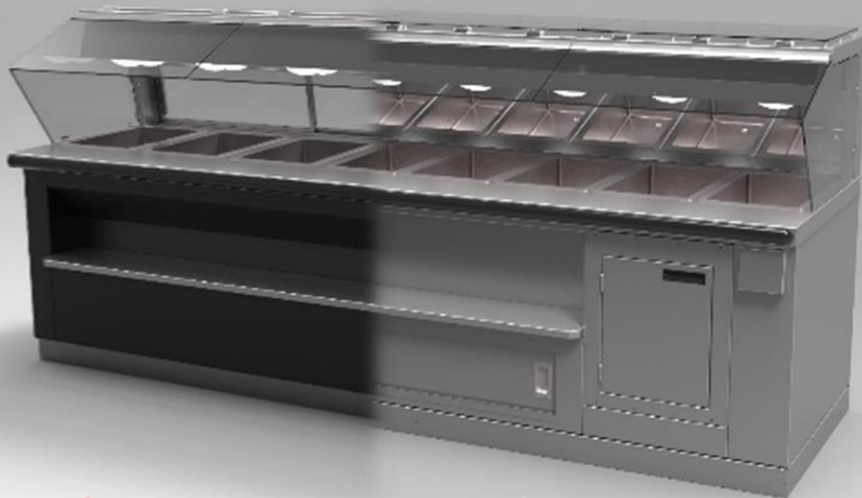
STONE COUNTERTOPS

The next level of upgrade in cosmetic appeal is stone – both natural and manufactured. We can match your store décor and adjacent cases.



STAINLESS STEEL, POWDER COATED OR LAMINATED STEEL BODY – ANY COLOR

Select your body finish – all stainless steel, powder coated steel in any color of the spectrum or any laminate color or pattern or woodgrain. Match your store décor or do something daring with an explosive burst of color.



Features & Options

HFB Series



HOT
Atlantic Food Bars
Hot & Cold Food Equipment Specialists

888-MEAL-SOLUTIONS (888-632-5765)

info@atlanticfoodbars.com

www.atlanticfoodbars.com



ESTATE SERIES

If you want a truly upscale look, then look no further than our Estate Series. Real carved wood corbels, columns and picture frame molding offer a warm and inviting, high end shopping experience.



MOBILE BARS - HOT FOOD - COLD FOOD & MORE

Small plug & play mobile hot, cold and soup bars are available from 4' long to any length you need. Spot merchandising of high profit foods by the pound will make your shoppers' experience more fun for them and more PROFITABLE for you.



NARROW FORMAT

If your floor space does not permit a deep hot food bar, we offer our HFB-N Series in a narrow format.



CUSTOM - ANY WAY YOU WANT IT - INCLUDE SOUP, COLD PANS, PROFILE MATCH, FLAT FRONT, WEDGES & MORE !

Built to match any existing lineup, so that you maintain a continual and consistent look. We will build to the provided profile spec. Customize to maximize your merchandising impact in the same footprint - add refrigerated wells, soup, and more !



Features & Options
HFB Series

Celebrating 70
Years in 2017 !

HOT
Atlantic Food Bars

Hot & Cold Food Equipment Specialists

888-MEAL-SOLUTIONS (888-632-5765)

info@atlanticfoodbars.com

www.atlanticfoodbars.com



CUSTOMIZE!

Self-Service Asian Hot Food, Soup & Rice Merchandiser ~ Features ~

NEW!

RICE COOKER BUILT INTO BODY NEXT TO 7QT MAGNETIC INDUCTION SOUP WARMING WELLS

Offers energy savings, reduced maintenance costs, and infinite digital temperature control.



NEW!

CUP DISPENSERS BUILT INTO THE BODY

Don't waste countertop space. No more messing up a beautiful presentation with sloppy organization of cups. Cups are taken right from within the base, under the soup wells and rice cooker.

Features & Options

HFB Series

**Celebrating 70
Years in 2017!**

HOT
Atlantic Food Bars

Hot & Cold Food Equipment Specialists

888-MEAL-SOLUTIONS (888-632-5765)

info@atlanticfoodbars.com

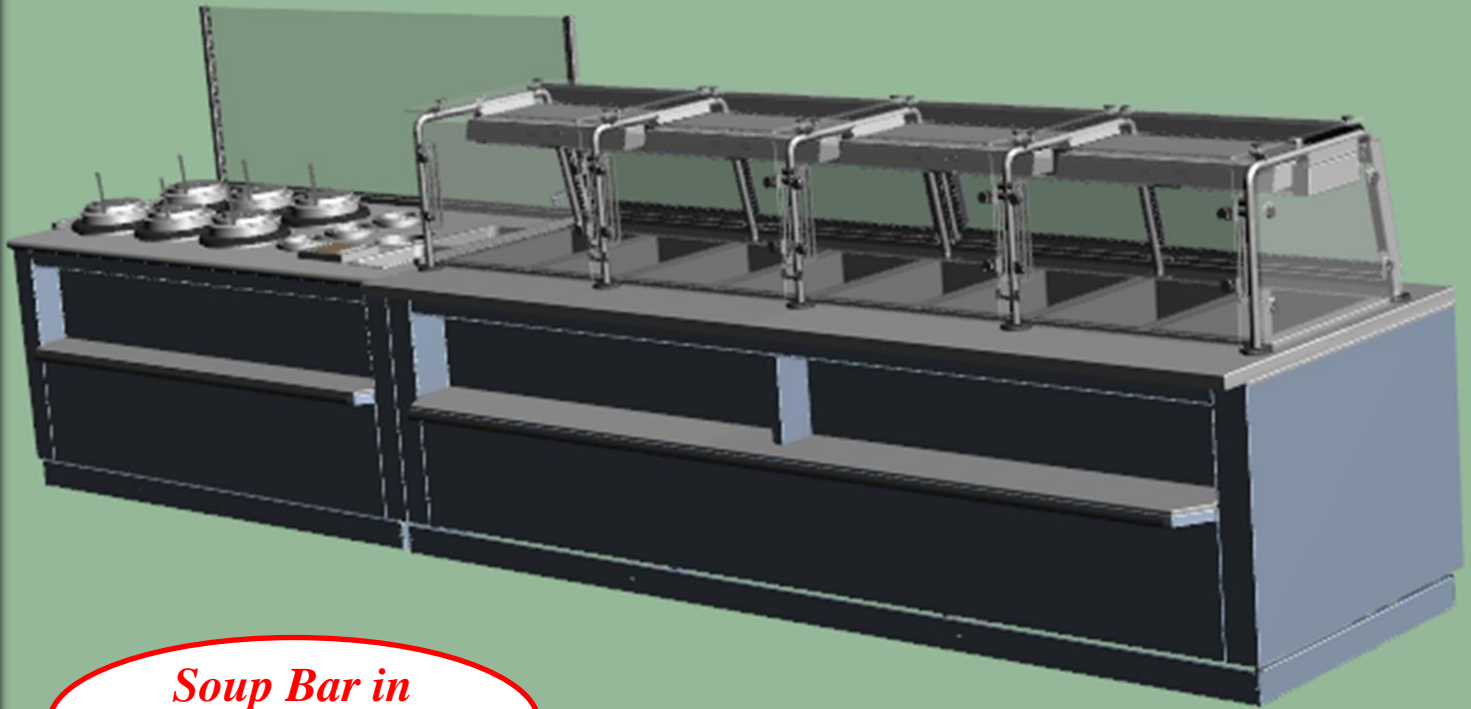
www.atlanticfoodbars.com



Convertible Self-To-Full Service

Hot Food Bar & Soup Bar

HFB-CSZ Series SW-CSTM Series



*Soup Bar in
Self Service Mode*



*Hot Food Bar in
Full Service Mode*
CLICK TO PLAY VIDEO DEMO OF
CONVERTIBLE SNEEZEGUARD !



Serving The
Foodservice Industry
For Over 70 Years!



Atlantic Food Bars
Hot Food Merchandising
Equipment Specialists

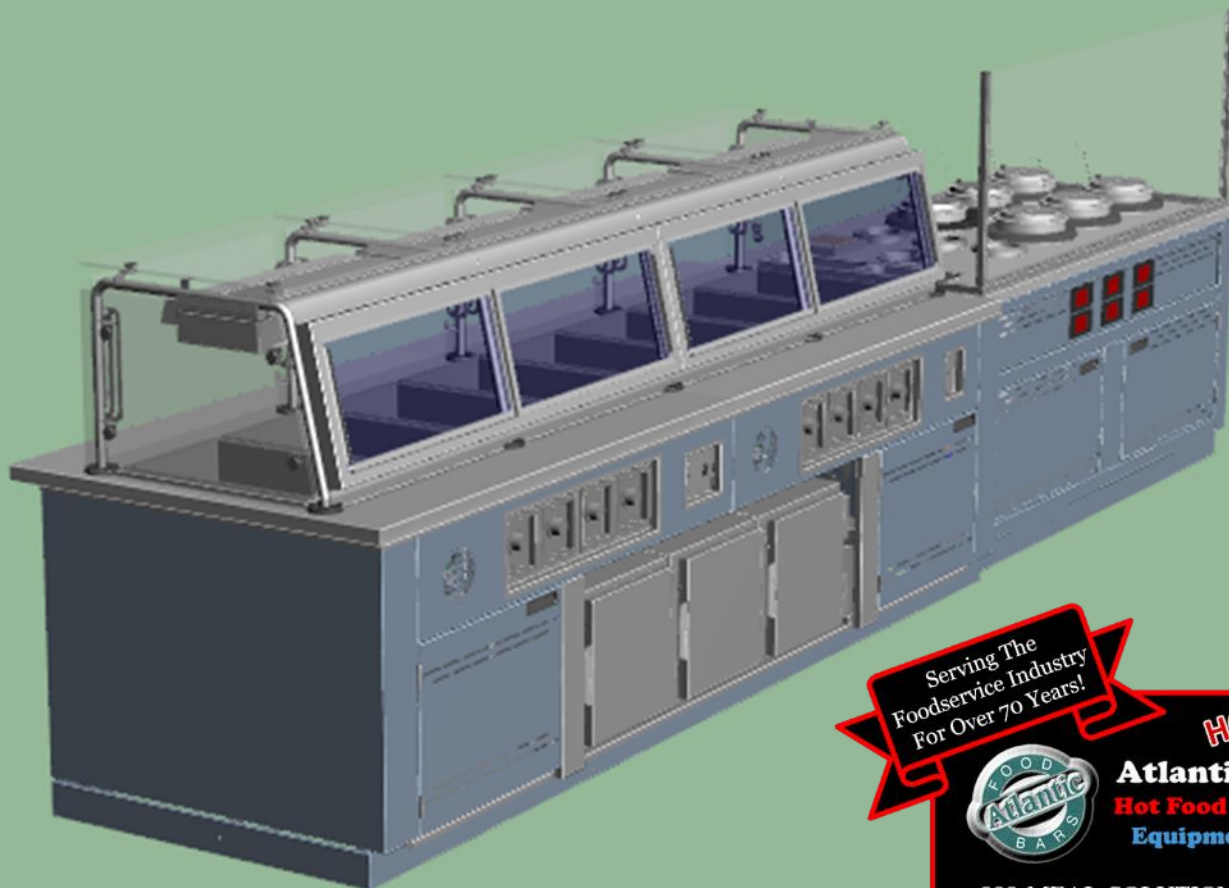
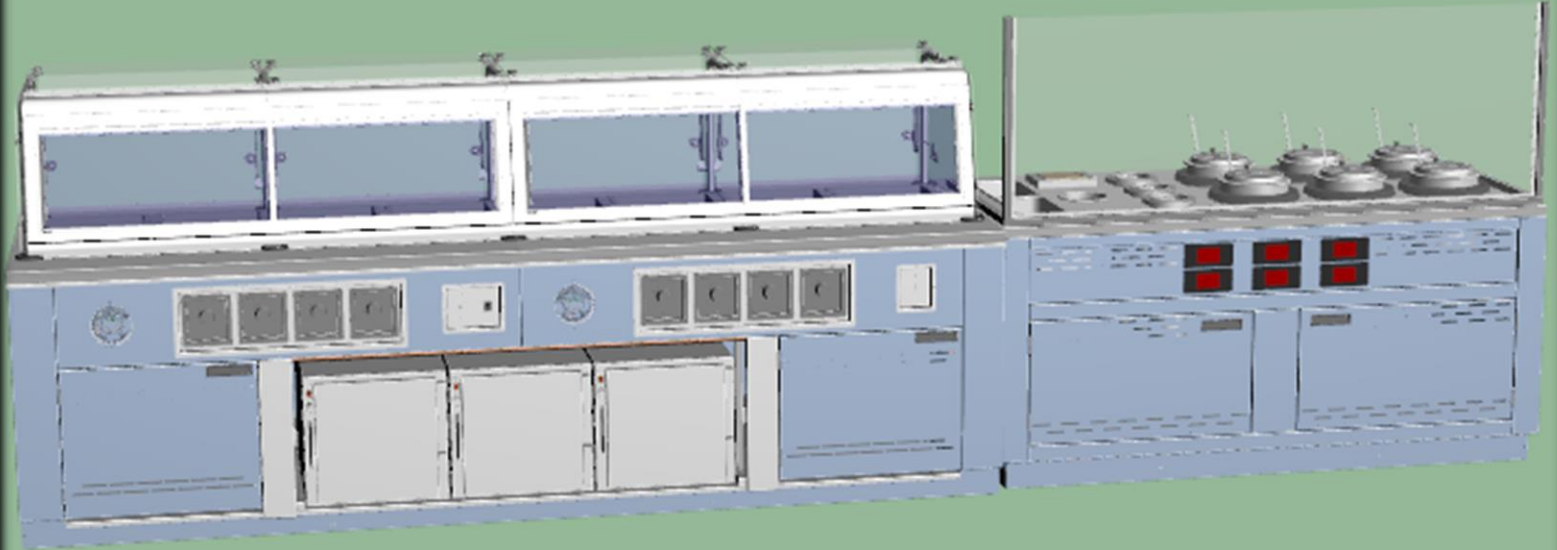
888-MEAL-SOLUTIONS (888-632-5765)
www.atlanticfoodbars.com

Scroll down for more

Convertible Self-To-Full Service

Hot Food Bar & Soup Bar

HFB-CSZ Series SW-CSTM Series



Serving The
Foodservice Industry
For Over 70 Years!



HOT
Atlantic Food Bars
Hot Food Merchandising
Equipment Specialists

888-MEAL-SOLUTIONS (888-632-5765)
www.atlanticfoodbars.com