

***Upscale your merchandising efforts and  
create restaurant-quality perception  
with our ABC Series  
Refrigerated Dry Aged Beef Case!***



Atlantic offers you the highest ROI, with a 1 year parts & labor warranty, simplicity of service and lower cost of ownership. Only Atlantic offers you the flexibility of self contained or remote refrigeration, 2 or 3 adjustable shelves, front or rear load access, beautiful LED accent lighting, and optional double paned tempered glass end panels for full visibility from every angle of your retail operation! Available in standard and custom sizes from 4' to 10'.



Our ABC Series **GUARANTEES** temperature maintenance and keeps your food looking fresh and inviting! Base model includes all stainless steel construction with our super cold self-contained gravity coil refrigeration system and three levels of display. Hinged locking glass doors can be located on any side for employee or customer access. Each solid end can be modified to feature glass end views. Brilliant illumination shows off the food and makes it visible from 100 feet away.



**Atlantic Food Bars**  
**Hot & Cold Food Equipment Specialists**  
888-MEAL-SOLUTIONS (888-632-5765)

info@atlanticfoodbars.com    www.atlanticfoodbars.com



**ABC Series    Refrigerated Dry Aged Beef Case**

# ABC Series

## Refrigerated Dry Aged Beef Case



### Standard Features

- All stainless steel body construction
- Front glass doors
- Two end glass panes provide clear visibility from all angles
- Super cold self-contained gravity coil refrigeration system
- Includes base plus 2 adjustable shelves, offering outstanding product visibility and access
- Brilliant LED interior lighting
- Heavy-duty protective bumper in color of your choice

### Options

- Additional adjustable shelf (for 4 total levels – base plus three shelves)
- Substitute remote refrigeration in lieu of self-contained system
- Two end glass walls
- Eliminate one of two end glass walls
- Second set of glass doors for back of case
- Single side glass door and full front glass pane in lieu of double glass front doors and single glass side panel
- Powder coated or laminated finish to match your adjacent cases and store décor
- Fixed front glass and rear hinged glass doors
- 6" T leg base



Serving The Foodservice  
Industry For 75 Years!

**Atlantic Food Bars**

**Hot & Cold Food Equipment Specialists**

888-MEAL-SOLUTIONS (888-632-5765)

info@atlanticfoodbars.com

www.atlanticfoodbars.com

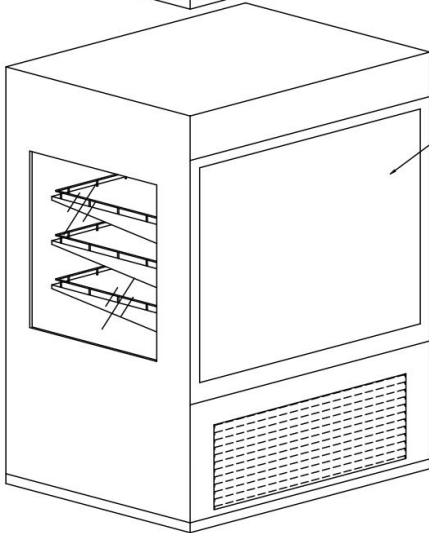
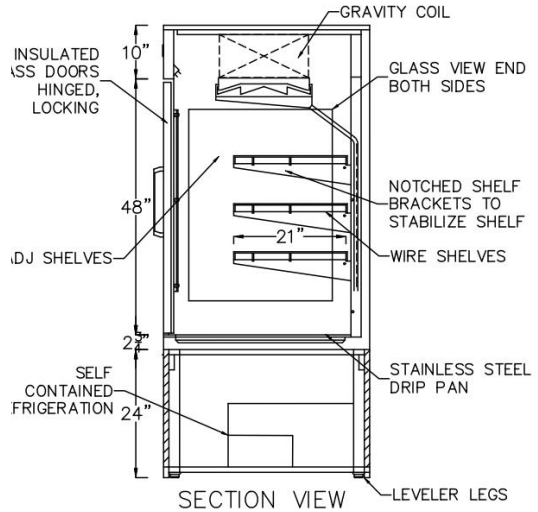
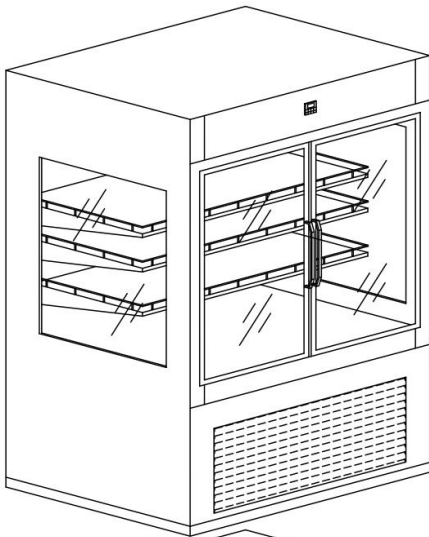




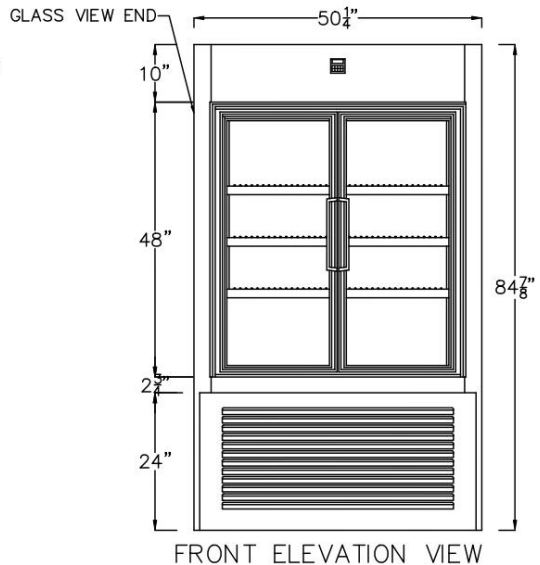
# ABC Series

## Refrigerated Dry Aged Beef Case

**Atlantic Food Bars** ABC Series Refrigerated Aged Dry Beef Cases are covered by our INDUSTRY'S LONGEST WARRANTY – 1 year parts and labor. Warranty does not cover glass breakage, light bulbs, or abuse / misuse by operator. It is our company's policy and mission to continually improve our products, consequently, Atlantic Food Bars reserves the rights to change materials and specifications without notice.



REMOVABLE STAINLESS STEEL BACK PANEL — REMOVES TO RETROFIT GLASS DOORS IN FIELD



IP CODE	DIMENSIONS L" X W" X H"	CAPACITY	VOLTAGE
		LEVELS	
ABC3939-OLB	39 x 39 x 85	3	120
ABC3939-AAS-OLB	39 x 39 x 85	4	120
ABC5039-OLB	50 x 39 x 85	3	120
ABC5039-AAS-OLB	50 x 39 x 85	4	120



**Atlantic Food Bars**

**Hot & Cold Food Equipment Specialists**

888-MEAL-SOLUTIONS (888-632-5765)

info@atlanticfoodbars.com

www.atlanticfoodbars.com



# ***Introducing our ABC Series***

## **The Atlantic Food Bars *Refrigerated Dry Aged Beef Case***

### **FRONT OR REAR LOAD**

Hinged locking, double pane tempered glass doors provide access to employees only from the back, or for customers, as well, from the front of the case for merchandising pre-packaged items.

### **OPTIONAL PRISTINE FIXED GLASS END PANELS**

Create a restaurant quality perception with clear views into the case from any or all angles.



### **1 YEAR PARTS & LABOR WARRANTY**

The industry's longest warranty lowers the life cycle cost of your display.

### **STAINLESS STEEL OR POWDER COATED FINISH**

Available in the color of your choice.

### **BRILLIANT LED LIGHTING**

In addition to energy and maintenance savings, brilliant illumination generates impulse sales.

### **ANTI-SWEAT HEATERS**

Ensures condensation doesn't interfere with your customers' views of the product.

### **SELF-CONTAINED OR REMOTE REFRIGERATION**



### **2 OR 3 FULLY ADJUSTABLE SHELVES**

Modify as your merchandising programs change – wire shelves can be spaced as desired to accommodate different products and adjustable support legs allow you to raise or lower your display case.



## **Atlantic Food Bars**

**HOT & COLD Food Equipment Specialists**

888-MEAL-SOLUTIONS (888-632-5765)

info@atlanticfoodbars.com

www.atlanticfoodbars.com

# Dry Aged Beef Case 39" x 39" with single hinged door & glass front and one glass end pane



Front and left end are fixed thermal tempered glass panels



Front is fixed thermal tempered glass panel and right end is hinged door with thermal tempered glass insert



Front view showing adjustable shelves on standards

Available with remote or self-contained refrigeration system

Available in 2 standard sizes : 39" x 39" which accommodate a single hinged door on any side of case and 50" x 39" which accommodates a double hinged door on either long side of case.

Also available in custom sizes

Available with glass on one side, two sides, three sides or all four sides

Celebrating  
75 Years In 2022!



**Atlantic Food Bars**  
**Hot & Cold Food**  
**Merchandising Equipment**  
**Specialists**

888-MEAL-SOLUTIONS (888-632-5765)

[www.atlanticfoodbars.com](http://www.atlanticfoodbars.com)